

[Compositeur anonyme]

[Partie]

Allemande, Courante, Menuet,
Bourrée (Bouree), La Coquette, Gigue

Si bémol majeur

Manuscrits de Vienne A-Wn1078

Vienne, Bibliothèque nationale autrichienne, collection de musique

A-Wn ms. 1078

Folios 9v. - 15r.

*Voir dans le manuscrit Harrach de New York US-NYp11, pages 36 à 51,
[Partie] pour liuto, violino et basso [NYp11_4]*

*Voir dans le manuscrit n° 1 de Göttsweig A-GO1, folios 52v-54r et 58r-58v, [Partie]
[A-GO1_34]*



2:da [Partie]

Allemande

Handwritten musical score for Allemande, 2:da [Partie]. The score is written on a grand staff (treble and bass clefs) in common time (C). The music is in G major (one flat). The score is divided into measures, with measure numbers 3, 5, 7, 9, and 11 indicated on the left. The notation includes various rhythmic values (quarter, eighth, sixteenth notes), rests, and accidentals. The piece features a repeating pattern of eighth notes in the right hand and a more complex bass line in the left hand. The score ends with a double bar line and repeat dots.

13

13

15

15

17

17

fermate

19

19

[R]

21

21

[R]

23

23

Courante

Handwritten musical score for Courante, measures 1-28. The score is written on a grand staff with treble and bass clefs. It includes various musical notations such as notes, rests, and ornaments, along with dynamic markings like *f* and *ff*. Measure numbers 3, 5, 10, 15, 20, and 25 are indicated on the left side of the page.

Measure 1: *3* *a r a*

Measure 2: *a b a a*

Measure 3: *a a a a*

Measure 4: *a b a b*

Measure 5: *a r a*

Measure 6: *a a a a*

Measure 7: *a a a a*

Measure 8: *a a a a*

Measure 9: *a a a a*

Measure 10: *a a a a*

Measure 11: *a a a a*

Measure 12: *a a a a*

Measure 13: *a a a a*

Measure 14: *a a a a*

Measure 15: *a a a a*

Measure 16: *a a a a*

Measure 17: *a a a a*

Measure 18: *a a a a*

Measure 19: *a a a a*

Measure 20: *a a a a*

Measure 21: *a a a a*

Measure 22: *a a a a*

Measure 23: *a a a a*

Measure 24: *a a a a*

Measure 25: *a a a a*

Measure 26: *a a a a*

Measure 27: *a a a a*

Measure 28: *a a a a*

30

35

39

44

49

54



Menuet

affettuoso

3
4

5

10

15

21

26

32

R

Bourrée (Bouree)

Handwritten musical score for Bourrée (Bouree) in C major, 3/4 time. The score is written on a single staff with a treble clef and a common time signature (C). The music is divided into measures, with measure numbers 4, 8, 12, 16, 21, and 26 indicated on the left. The notation includes notes, rests, and various ornaments (trills, mordents, grace notes). The key signature is one flat (B-flat), and the time signature is 3/4. The piece concludes with a decorative flourish.

La Coquette

1

4

8

13

18

22

26

R

30

34

Gigue

1. Original : pas d'indication rythmique

28

Ma a Ma 4 Ma Ma Ma 4

32

a 4 a a Ma Ma a a

36

4 a a a

39

a a Ma a a a a a a a a a

R pia:

43

a a a a a a a a a a a a

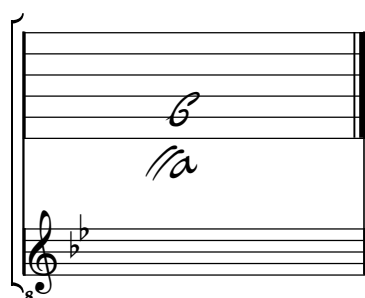
fort: Ma Ma

47

Ma a a a a a a a

Tonalité : Si bémol majeur
Accord des basses du luth : 1 bémol

Scordature par octave



Accord des 11 chœurs du luth

