

# *Johann Anton Graf Losy von Losinthal*

(ca 1645 - 3 sep. 1721)

## [Partie]

Ouverture de M<sup>r</sup>: C: Logis, Allemande,  
Courante (Courrente), Sarabande, Gavotte,  
Menuet (Menuette), Bourrée (Bourre),  
Gigue (Guige), Gigue (Guige)

Fa majeur

Manuscrits de Vienne A-Wn18761

*Vienne, Bibliothèque nationale autrichienne, collection de musique*

A-Wn ms. 18761

*Folios 31v. - 43v.*



# Partie

## Ouverture de M<sup>r</sup>: C: Logis

♩   ♪   ♩
♩   ♩   ♩

(1\*)

3

(2\*)

6

9

12

17

22

1. Original: dotted eighth note  
 2. Original: quarter note without dot

28

(1\*)

33

38

43

48

54

59

1. Slur not found in the original tablature

# Allemande

Handwritten musical score for Allemande, measures 1-11. The score is written on a grand staff with treble and bass clefs. It includes various musical notations such as notes, rests, slurs, and dynamic markings (f, h, m). Measure numbers 3, 5, 7, 9, and 11 are indicated on the left. The piece concludes with a double bar line and repeat dots in measure 11.

13

4

15

4

17

4

R (1\*)

19

4

1. Original: no rhythm sign

# Courante (Courrente)

Handwritten musical score for Courante (Courrente) in 3/4 time. The score consists of six systems of music, each with a treble and bass staff. The notation includes various rhythmic values (quarter, eighth, sixteenth notes), rests, and accidentals. The key signature is one flat (F major). The piece ends with a repeat sign and a first ending bracket labeled (1\*).

1. Original: rest not found

25

29

33

37

41

# Sarabande

Handwritten musical score for Sarabande, measures 1-28. The score is written on a grand staff with treble and bass clefs. It includes various musical notations such as notes, rests, dynamics (p, f), and articulation marks (accents, slurs). Measure numbers 3, 5, 11, 16, 22, and 28 are indicated on the left side of the page.

Measures 1-4: Treble clef, 3/4 time signature. Notes: quarter, quarter, quarter, quarter, quarter, quarter. Bass clef: quarter, quarter, quarter, quarter, quarter, quarter. Dynamics: *p*, *f*, *a*.

Measures 5-10: Treble clef: quarter, quarter, quarter, quarter, quarter, quarter. Bass clef: quarter, quarter, quarter, quarter, quarter, quarter. Dynamics: *a*, *f*, *a*, *f*, *a*.

Measures 11-15: Treble clef: quarter, quarter, quarter, quarter, quarter, quarter. Bass clef: quarter, quarter, quarter, quarter, quarter, quarter. Dynamics: *a*, *f*, *a*, *f*, *a*.

Measures 16-21: Treble clef: quarter, quarter, quarter, quarter, quarter, quarter. Bass clef: quarter, quarter, quarter, quarter, quarter, quarter. Dynamics: *f*, *f*, *f*, *a*, *a*, *a*.

Measures 22-27: Treble clef: quarter, quarter, quarter, quarter, quarter, quarter. Bass clef: quarter, quarter, quarter, quarter, quarter, quarter. Dynamics: *f*, *f*, *f*, *a*, *a*, *a*.

Measures 28-31: Treble clef: quarter, quarter, quarter, quarter, quarter, quarter. Bass clef: quarter, quarter, quarter, quarter, quarter, quarter. Dynamics: *f*, *f*, *f*, *a*, *a*, *a*.



# Gavotte

Handwritten musical notation for the first system of a Gavotte. It consists of two staves. The top staff has a treble clef and a common time signature (C). The bottom staff has a bass clef. The music begins with a whole note chord of G4 and D5. The melody in the top staff consists of quarter notes: G4, A4, B4, C5, B4, A4, G4. The bass line in the bottom staff consists of half notes: G3, A3, B3, C4, B3, A3, G3.

Handwritten musical notation for the second system, starting at measure 3. It consists of two staves. The top staff has a treble clef. The bottom staff has a bass clef. The music continues with quarter notes in the top staff: G4, A4, B4, C5, B4, A4, G4. The bass line consists of half notes: G3, A3, B3, C4, B3, A3, G3. There is a repeat sign (double bar line with two dots) after the first two measures. The system ends with two measures of quarter notes: G4, A4, B4, C5, B4, A4, G4. The bottom staff has a '4' below the first measure and another '4' below the second measure.

Handwritten musical notation for the third system, starting at measure 6. It consists of two staves. The top staff has a treble clef. The bottom staff has a bass clef. The music continues with quarter notes in the top staff: G4, A4, B4, C5, B4, A4, G4. The bass line consists of half notes: G3, A3, B3, C4, B3, A3, G3. There is a '4' below the first measure and another '4' below the second measure.

Handwritten musical notation for the fourth system, starting at measure 9. It consists of two staves. The top staff has a treble clef. The bottom staff has a bass clef. The music continues with quarter notes in the top staff: G4, A4, B4, C5, B4, A4, G4. The bass line consists of half notes: G3, A3, B3, C4, B3, A3, G3.

Handwritten musical notation for the fifth system, starting at measure 12. It consists of two staves. The top staff has a treble clef. The bottom staff has a bass clef. The music continues with quarter notes in the top staff: G4, A4, B4, C5, B4, A4, G4. The bass line consists of half notes: G3, A3, B3, C4, B3, A3, G3. There is a '4' below the first measure and another '4' below the second measure.

Ⓜ

Handwritten musical notation for the sixth system, starting at measure 15. It consists of two staves. The top staff has a treble clef. The bottom staff has a bass clef. The music continues with quarter notes in the top staff: G4, A4, B4, C5, B4, A4, G4. The bass line consists of half notes: G3, A3, B3, C4, B3, A3, G3. There is a '4' below the first measure and another '4' below the second measure. The system ends with a double bar line and a decorative flourish.

# Menuet (Menuette)

Musical score for Menuet (Menuette) in 3/4 time. The score consists of five systems of music. The first system (measures 1-4) starts with a treble clef and a 3/4 time signature. The melody is written on a single staff with notes and rests. The bass line is indicated by letters 'a', 'f', and 'a' with slurs. The second system (measures 5-8) continues the melody and includes a repeat sign. The third system (measures 9-12) features a change in the bass line to a 4/4 time signature. The fourth system (measures 13-16) includes a repeat sign and a 'R' in a box. The fifth system (measures 17-20) continues the melody. The sixth system (measures 21-24) concludes the piece with a final cadence and a decorative flourish.

# Bourrée (Bourre)

4

8

11

16

20

R

# Gigue (Guige)

(1\*)

3

5

7

9

11

13

15

17

19

21

23

25

27

1. Original: half note without dot  
 2. Incomplete original, two reconstituted measures

# Gigue (Guige)

♩ ♩ ♩ ♩ ♩ ♩ ♩ ♩ ♩ ♩ ♩ ♩

7 ♩ ♩ ♩ ♩ ♩ ♩ ♩ ♩ ♩ ♩ ♩ ♩

14 ♩ ♩ ♩ ♩ ♩ ♩ ♩ ♩ ♩ ♩ ♩ ♩

21 ♩ ♩ ♩ ♩ ♩ ♩ ♩ ♩ ♩ ♩ ♩ ♩

28 ♩ ♩ ♩ ♩ ♩ ♩ ♩ ♩ ♩ ♩ ♩ ♩

35 ♩ ♩ ♩ ♩ ♩ ♩ ♩ ♩ ♩ ♩ ♩ ♩

41

48

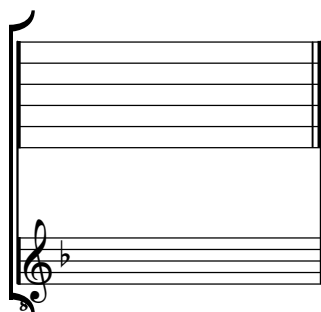
55

62

# Tonalité : Fa majeur

*Accord ordinaire du luth*

## *Scordature par octave*



## *Accord des 11 chœurs du luth*

