

[Compositeur(s) anonyme(s)]

[4 pièces]

Air & 3 menuets (Menuette)

Ré mineur

Manuscrits de Vienne A-Wn18761

Vienne, Bibliothèque nationale autrichienne, collection de musique

A-Wn ms. 18761

Folios 2r. - 4r.



Air

3

a k k | *f* *a* *a* *a* | *f* *a* *a*

4

a r a | *f* *a* *a* *a* | *a* *a* *a* *a* *r e* | *a* *r e*

8

r e r a r | *a k h* | *k h k k a r* | *e a r e a r*

12

e a e r e | *r a r e f r a* | *r e e f e r* | *f e r*

Ⓜ

16

a r a e | *a a a a* | *a*

Menuet (Menuette)

3 *a a a* *a r a r* *g e r g* *k a k m n*

4 *i k i k h* *h k h i h* *i i h h i* *h k a r*

8 *g a* *a a r a b* *a a a* *a a*

12 *g a a g a* *k h i h h k* *g h g h g*

15 *h g g h* *h f a h a* *a r a* *a a r e*

19 *f e f a r a* *e f e r a* *a r a a* *g b a g*

23 *r a e a* *g a*

R



Menuet (Menuette)

Handwritten musical score for a Minuet (Menuette) in 3/4 time, featuring a treble and bass clef. The score is divided into measures with corresponding notes and rests. The notation includes various rhythmic values (quarter, eighth, and sixteenth notes) and rests, along with dynamic markings such as *f* (forte) and *a* (accents). The piece concludes with a decorative flourish.

Measures 1-3: Treble clef, 3/4 time. Notes: *f* (quarter), *f* (quarter), *e* (quarter), *f* (quarter), *e* (quarter). Bass clef: *a* (quarter), *a* (quarter), *a* (quarter).

Measures 4-8: Treble clef, 3/4 time. Notes: *a* (quarter), *a* (quarter), *r* (quarter), *a* (quarter), *a* (quarter), *r* (quarter), *a* (quarter), *a* (quarter), *r* (quarter), *a* (quarter), *r* (quarter), *a* (quarter), *a* (quarter), *r* (quarter), *a* (quarter). Bass clef: *a* (quarter), *a* (quarter), *a* (quarter), *a* (quarter), *a* (quarter), *a* (quarter), *a* (quarter), *a* (quarter).

Measures 9-12: Treble clef, 3/4 time. Notes: *a* (quarter), *a* (quarter), *r* (quarter), *a* (quarter), *a* (quarter), *a* (quarter), *a* (quarter), *a* (quarter), *a* (quarter), *a* (quarter), *a* (quarter), *a* (quarter), *a* (quarter), *a* (quarter), *a* (quarter), *a* (quarter). Bass clef: *a* (quarter), *a* (quarter), *a* (quarter), *a* (quarter), *a* (quarter), *a* (quarter), *a* (quarter), *a* (quarter).

Measures 13-16: Treble clef, 3/4 time. Notes: *a* (quarter), *a* (quarter), *a* (quarter), *a* (quarter), *a* (quarter), *a* (quarter), *a* (quarter), *a* (quarter), *a* (quarter), *a* (quarter), *a* (quarter), *a* (quarter), *a* (quarter), *a* (quarter), *a* (quarter), *a* (quarter). Bass clef: *a* (quarter), *a* (quarter), *a* (quarter), *a* (quarter), *a* (quarter), *a* (quarter), *a* (quarter), *a* (quarter).

Measures 17-21: Treble clef, 3/4 time. Notes: *a* (quarter), *a* (quarter), *a* (quarter), *a* (quarter), *a* (quarter), *a* (quarter), *a* (quarter), *a* (quarter), *a* (quarter), *a* (quarter), *a* (quarter), *a* (quarter), *a* (quarter), *a* (quarter), *a* (quarter), *a* (quarter). Bass clef: *a* (quarter), *a* (quarter), *a* (quarter), *a* (quarter), *a* (quarter), *a* (quarter), *a* (quarter), *a* (quarter).

Menuet (Menuette)

3

5

10

15

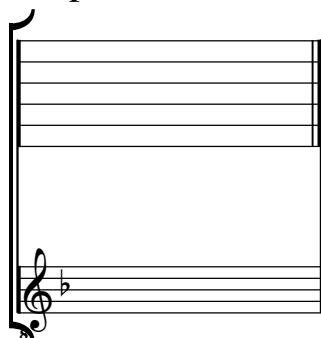
20

25

Tonalité : Ré mineur

Accord ordinaire du luth

Scordature par octave



Accord des 11 chœurs du luth

