

[Johann Michael Kühnel]

[(1665 - après 1725)]

[Partie]

Concerto, Menuet, Courante, Polonoise, Gigue

Si bémol majeur

Manuscrit de Vienne A-Wn18829

Vienne, Bibliothèque nationale autrichienne, Collection de musique

A-Wn ms. 18829

Folios 2v. - 7r.

Voir dans le manuscrit de Brno CZ-Bm372, pages 34 à 37 : Concerto, Courante et Gigue. (CZBm372_47)

Voir dans le manuscrit n° 1 de Göttweig, folios 54v. à 57v. Ex. B Moll Solo (A-GO1_34)

Voir dans le manuscrit de Wroclaw PL-WRu2002, pages 55 à 57 : Courante et Menuet de la Parthia Auth: M. Kunel. (WRu23)

Voir dans le manuscrit d'Haslemere GB-HAB2, pages 157 et 158 Gigue [Has104]



Concerto

3

5

7

9

11

13

(1*)

1. Sixteenth note in the original tablature

15

5

17

Solo

(1*)

19

5

4

21

4

23

a

a

25

a

(2*)

27

(3*)

5

.../...

1. Slur one note later in the original tablature
2. Thumb fingering found in the original tablature
3. Thumb fingering not found in the original tablature

29

31

33

35

37

39

41

43 *m* *m*

45 *m* *m*

47 *m* *n* *m* *n* *m*

49 *n* *m* *n* *m* *n* *m* *n* *n* *m* *n*

52 *n* *m* *n* *m* *n* *n* *n*

54 *m* *m* *n* *m* *n* *n*

1. Original: rest with 11 course lute

Menuet

3

5

9

14

18

23

28

e e e e h a h a f a e a e a b a a a a a b a a b a

//a //a 4 5 5

33

e b b b b a a b a e e b a a b a a b a a a e b b

6 5

38

e b a f a a e a f a f f e f a f a a b e b

a e a e a e 4

43

e f a b a b b e a b b a f a a e a f a

//a //a a a a e

48

f f e f a f a a b e b e f a b a f a f a b

a e a e 4 //a //a a a

53

b e a a b b a

//a a 5

Courante

Handwritten musical score for Courante, featuring a single staff with rhythmic notation and tablature. The score is divided into measures with measure numbers 4, 9, 13, 17, and 21. The notation includes rhythmic symbols (vertical stems with flags) and tablature (letters a, b, r, h, f on a five-line staff).

Measure 4: 3 b b b | a a r | a a r b a | b r a b a b

Measure 9: a a a | a r a b a | a a b a r b b a b | a a b a a

Measure 13: b a b a b | a b a b a | r b r a r a b b | a a b a

Measure 17: a a | b a r a | a a b a r | a a e r

Measure 21: e h h f h | h f a | r a r | a a r

1. Slur not found in the original tablature
 2. Original: slur not found

24

Handwritten musical notation for measures 24-28. The staff shows notes with fingerings and slurs. Above the staff are rhythmic symbols: a quarter note, a quarter note with a slur, a quarter note with a slur, a quarter note with a slur, a quarter note, and a quarter note.

29

Handwritten musical notation for measures 29-32. The staff shows notes with fingerings and slurs. Above the staff are rhythmic symbols: a quarter note with a slur, a quarter note with a slur, a quarter note with a slur, a quarter note with a slur, and a quarter note.

33

Handwritten musical notation for measures 33-37. The staff shows notes with fingerings and slurs. Above the staff are rhythmic symbols: a quarter note, a quarter note, a quarter note, a quarter note, and a quarter note. There are also some vertical lines above the notes in measures 34 and 35.

38

Handwritten musical notation for measures 38-42. The staff shows notes with fingerings and slurs. Above the staff are rhythmic symbols: a quarter note with a slur, a quarter note with a slur, a quarter note with a slur, a quarter note with a slur, a quarter note with a slur, and a quarter note with a slur.

43

Handwritten musical notation for measures 43-47. The staff shows notes with fingerings and slurs.

48

Handwritten musical notation for measures 48-52. The staff shows notes with fingerings and slurs. Above the staff are rhythmic symbols: a quarter note, a quarter note with a slur, a quarter note with a slur, a quarter note with a slur, a quarter note with a slur, and a quarter note with a slur. The piece ends with a double bar line and a decorative flourish.

Polonoise

3

6

10

14

(2*)

(3*)

(1*)

- 1. Slur not found in the original tablature
- 2. Slur not found in the original tablature
- 3. Slur not found in the original tablature

Gigue

Handwritten musical score for a Gigue, consisting of six systems of music. Each system is numbered on the left (1, 4, 8, 12, 16, 20). The notation includes a treble clef, a 6/8 time signature, and various musical symbols such as notes, rests, and ornaments. The bass line is indicated by numbers 5 and 4 below the staff. The score includes a repeat sign at the end of the fifth system.

1. Bass one note later in the original tablature

23

1. Original: D (a on course 2)

27

31

35

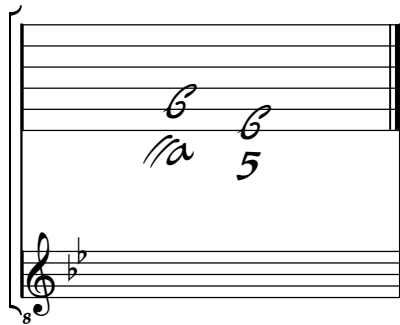
39

Fine

1. Original: D (a on course 2)

Tonalité : Si bémol majeur
Accord des basses du luth : 2 bémols

Scordature par octave



Accord des 13 chœurs du luth

