

[Silvius Leopold Weiss ?]

(1687 - 16 oct. 1750)

La Forza della Musica

[Entrée], Menuet, Trio, Capriccio (Capricio)

~~WeissSW~~

Ré mineur

Manuscrit de Grüssau PL-Wu8135

I Trastulli d'Apollo

Bibliothèque universitaire de Varsovie

PL-Wu ms. RM 8135 (olim 1938.111; Inv. 8135)

Folios 27v à 30v

*Voir dans le manuscrit de Grüssau PL-Wu2003, folios 72r à 73r, Partie
[PLWu2003_42]*

*Voir dans le manuscrit de Grüssau PL-Wu2005, folios 72r à 73r, Partie
[PLWu2005_7]*



La Forza della Musica

Orpheus waget es durch süße Gewalt seiner Saiten in die Hölle zu dringen, besänffiget den Cerberum, beweget den Pluto, erhält durch seine angenehme Music, verliebert aber bald wieder seine geliebte Euridice, kehret also klagend zurück.

Entrée

Con due Violini e il Basso

3

5

7

9 [Fin]

11

(1*)

1. Original : dans cette mesure, la seule indication de rythme est une croche sur le premier temps.

13

15

17

20

23

25

Da Capo

Menuet

3

6

11

15

19

23

26

[Fin]

Da Capo

Detailed description: The score is for a Minuet in 3/4 time. It consists of 26 measures. The notation includes a single melodic line with various ornaments (flourishes) and fingerings (e.g., 3, 4, 5, 6). The piece ends with a double bar line and a repeat sign. The word 'Da Capo' is written below the final measure.

Trio

Handwritten musical score for Trio, featuring a single melodic line on a five-line staff. The notation includes rhythmic values (e.g., 3, 4, 5, 6), note heads (e.g., a, f, e), and various ornaments (e.g., trills, mordents, grace notes). The score is divided into measures, with measure numbers 6, 11, 17, 23, 28, 34, and 41 marked on the left. The key signature is one flat (B-flat), and the time signature is 3/4. The piece concludes with a double bar line and a repeat sign.

Da Capo Menuet

[Fugue]

Musical score for a fugue, consisting of six systems of notation. Each system includes a rhythmic line above a staff and a staff with notes. The score is marked with measure numbers 5, 9, 13, 17, 21, and 25.

System 1: Rhythmic line: ♪ ♪ ♪ ♪ ♪ ♪. Staff: C-clef, common time. Notes: a a a | r ♭ a b b | a b ♭ e e | ♭ r ♭.

System 2: Rhythmic line: ♪ ♪ ♪ ♪ ♪ ♪. Staff: F-clef. Notes: F r a b b | a a r ♭ ♭ | ♭ r a r b a | a b b b | a ♭ a r.

System 3: Rhythmic line: ♪ ♪ ♪ ♪ ♪ ♪. Staff: G-clef. Notes: ♭ a r a a r | ♭ ♭ ♭ ♭ ♭ | ♭ ♭ a b | ♭ a r.

System 4: Rhythmic line: ♪ ♪ ♪ ♪ ♪ ♪. Staff: C-clef. Notes: a a a | 5 ♭ a b b | ♭ b ♭ e e | ♭ ♭ ♭.

System 5: Rhythmic line: ♪ ♪ ♪ ♪ ♪ ♪. Staff: G-clef. Notes: ♭ r a r e | f a ♭ a f | f e f e g | h f h h f h.

System 6: Rhythmic line: ♪ ♪ ♪ ♪ ♪ ♪. Staff: G-clef. Notes: h f h h f h | f f f h f h | e ♭ e ♭ e ♭ | e b e ♭ a a.

System 7: Rhythmic line: ♪ ♪ ♪ ♪ ♪ ♪. Staff: G-clef. Notes: f ♭ f f ♭ f | ♭ ♭ ♭ f ♭ f | r b r b b r | ♭ b a ♭ a a b a.

Additional markings below the staves include: *la la la* (under System 3), *la* and *5* (under System 4), *5*, *la*, *la*, and *4* (under System 5), *4*, *4*, *la*, and *la* (under System 6), and *5*, *5*, *la*, and *la* (under System 7).

29

a a a b b b a a

a a

31

b b a r a a b a b b a b a a r a a

a a b

34

b r b a b b a e f e f a r a a b a g g

b e f f

5

38

r a b b a b a b a e e a a f a r a

a 5

42

r a b a a b a r a r a b a a a a b a b a

b a a

46

b b a b a r a b a b f a a a r r a b a

b a a a a

4

50

a a a r r e e a a a f f e e a a a

a a a f f a a

a a

.../...

54

e a r a a | r r a b b | b a r a r | a a a a

a b a a a a a a a a

58

a r a r e | a a a a | a e e e | a r e r r

a b a b b a a a

62

a a r a a | a r | a r a r a r a | a r a a

a a 4 a a r a a

66

r a r r a r | a r a a a r a | r a r a b | b a a e

a a a a a a 4 a

70

a r a r | f f a a | a a a a | b b r r

a a a 4 4 4 4 4

74

e a e a a a | r b r r r r

4 4 4 4

76

a a r r | a a a a | r a b b | a b a e e

4 4 a a a a a b b a b a e e

80

84

al/a

88

4 a 5

92

5 a a

96

4 4 4 4 4 4 4 4

100

4 4 4 4

104

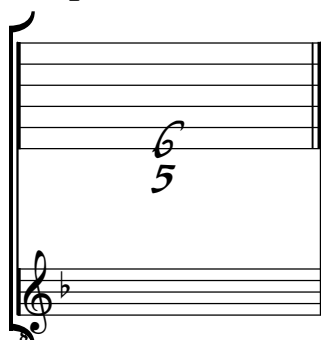
a 4 a a a 5 4 a

a x

Tonalité : Ré mineur

Accord des basses du luth : 1 bémol

Scordature par octave



Accord des 13 chœurs du luth

