

[Compositeur anonyme]

Gigue

Sol mineur

Manuscrit de Varsovie PL-Wu2010

Warszawa, Biblioteka Uniwersytecka w Warszawie

Gabinet Zbiorów Muzycznych

PL-Wu ms. RM 4142 (olim Ms. Mf. 2010)

Page 17

Voir dans le manuscrit de Wroclaw PL-WRu, page 60, la Gigue.

[WRu25c]



Gigue

Musical score for Gigue, featuring rhythmic notation above and tablature below. The score is divided into systems of five measures each, with measure numbers 5, 10, 15, 20, and 25 indicated on the left.

System 1 (Measures 1-5): The first measure is marked with a 6/8 time signature. The tablature includes notes 'ra', 'a', 'a', 'a', 'a', and 'a'. A '4' is written below the fourth measure.

System 2 (Measures 6-10): The tablature includes notes 'a', 'e', 'a', 'a', 'a', and 'a'. A double bar line with repeat dots is present at the end of the system.

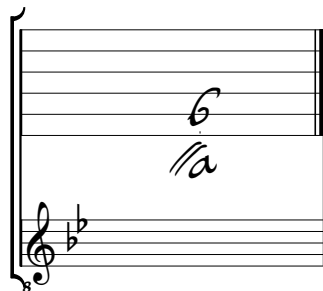
System 3 (Measures 11-15): The tablature includes notes 'a', 'a', 'a', 'a', 'a', and 'a'.

System 4 (Measures 16-20): The first three measures contain the rhythmic sequence 'arrafa', 'rarara', and 'rar'. The tablature includes notes 'a', 'a', 'a', 'a', 'a', and 'a'.

System 5 (Measures 21-25): The tablature includes notes 'a', 'a', 'a', 'a', and 'a'. The system concludes with a double bar line and a large decorative flourish.

Tonalité : Sol mineur.

Scordature par octave



Accord des 12 chœurs du luth

