

Silvius Leopold Weiss

(1687 - 16 oct. 1750)

Rondeau

WeissSW App 11 (Sm 578)

Ré mineur

Manuscrit de Grüssau PL-Wu2010

Bibliothèque universitaire de Varsovie

(PL-Wu RM 4142 (olim Mf. 2010))

Pages 250 et 251

*Voir dans le manuscrit de Bruxelles B-Bc15, pages 18 et 19 : Capriccio
(B-Bc15_9)*



Rondeau

The musical score for 'Rondeau' is written in C major and common time. It consists of a single melodic line with various ornaments and dynamics. The score is divided into measures, with measure numbers 4, 9, 13, 17, 21, and 25 indicated at the beginning of their respective lines. The notation includes notes, rests, and ornaments such as mordents, grace notes, and trills. Dynamics like *f* (forte) and *h* (hairpins) are used throughout. The piece concludes with a double bar line and repeat dots.

4

9

13

17

21

25

29

6 a r 6 2 6 a a 2 6 a r 6 2 6 a a 2

4 4 4 4

33

6 a r a a g g e r 2 r a f e f

a a a a

37

r a r a 2 e r e 2 r a 2 6 r a r

a a a a

41

a r a e r a r 2 r a r a r e a f f 2 e

e a a a

45


e e r a r r 2 a 6 6 a e e a r e

a a a a

49

a r e g f

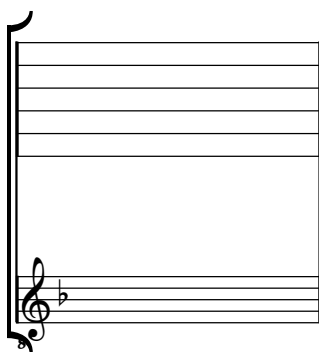
a a



Tonalité : Ré mineur

Accord ordinaire du luth

Scordature par octave



Accord des 11 chœurs du luth

