

Compositeur anonyme

2 pièces sans titre

La mineur

Manuscrit de Varsovie PL-Wu2009

Warszawa, Biblioteka Uniwersytecka w Warszawie,

Gabinet Zbiorów Muzycznych

PL-Wu RM 4141 (olim Mf. 2009)

Pages 8 & 9

*Voir le manuscrit de Varsovie PL-Wu2008, pages 8-9, 2 pièces sans titre
[PL-Wu2008_5*



Sans titre

1

Arpeggio

5

9

14

19

24

29

4 4 4 4 2 4 4 4 4 4 r a a a a r a a a a r a a a a

34

e e e e r a a a a r a a a a r a a a a r a a a a

39

r a a a a r a a 6

Sans titre

Musical notation system 1: Treble clef, common time (C). Rhythmic notation above the staff: quarter, quarter, eighth, quarter, eighth, quarter, eighth. The staff contains notes: *r*, *a*, *r*, *e*, *a*, *r*, *a*, *r*, *a*, *r*, *a*. A repeat sign is present after the first measure.

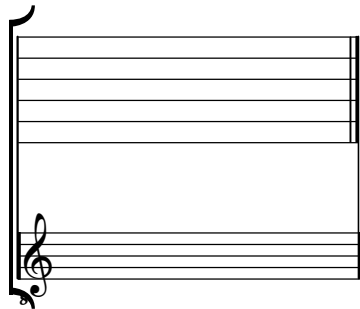
Musical notation system 2: Treble clef. Rhythmic notation above the staff: quarter, quarter, quarter, eighth, quarter, eighth. The staff contains notes: *r*, *r*, *e*, *a*, *r*, *e*, *r*, *a*, *r*, *a*. A repeat sign is present after the first measure.

Musical notation system 3: Treble clef. Rhythmic notation above the staff: quarter, quarter, eighth, quarter, eighth. The staff contains notes: *r*, *a*, *a*, *r*, *a*, *r*, *a*, *r*, *e*. A repeat sign is present after the first measure. A box containing the letter 'R' is located below the staff.

Musical notation system 4: Treble clef. Rhythmic notation above the staff: quarter, eighth, quarter, eighth, quarter. The staff contains notes: *r*, *a*, *a*, *r*, *a*, *r*, *a*, *a*. A repeat sign is present after the first measure. The system concludes with a decorative flourish.

Accord ordinaire du luth : La mineur

Scordature par octave



Accord des 13 chœurs du luth

