

*Silvius Leopold Weiss ?*

(1687 - 16 oct. 1750)

# Prælude

~~WeissSW~~

Do Majeur

**Manuscrit de Varsovie PL-Wu2008**

*Warszawa, Biblioteka Uniwersytecka w Warszawie,  
Gabinet Zbiorów Muzycznych*

PL-Wu RM 4140 (olim Mf. 2008)

*Pages 2, 3*

*Voir le manuscrit de Wroclaw 2002 PL-WRu, page 87, Prælude [Wru34]*

*Voir le manuscrit de Varsovie PL-Wu2009, page 2, 3, Prælude [PL-Wu2009\_2]*



# Præludium

2. 2. 2. 2.

Handwritten musical score for Præludium in C major, BWV 999 by Silivius Leopold Weiss. The score is written in tablature on a six-line staff with a common time signature (C). It consists of ten systems of music, each with a treble clef staff and a corresponding tablature staff below it. The tablature uses letters 'a' and 'r' to denote fret positions. The piece features various rhythmic patterns, including eighth and sixteenth notes, and rests. There are several trills and grace notes. The score is marked with dynamics like 'f' and 'h' (for harmonics). A common time signature 'C' is at the beginning. The piece ends with a double bar line and a repeat sign.

1. Tablature originale : pas d'indication rythmique

11

2. 2.

12

2. 2.

13

14

4 4 2 2 2 2 2

15

3

16

17

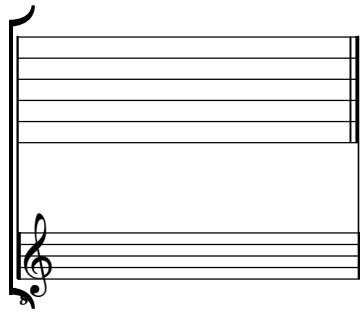
(1\*)

18

1. Tablature originale : note doublée

# Accord ordinaire du luth : Do majeur

*Scordature par octave*



*Accord des 13 chœurs du luth*

