

[Compositeur anonyme]

17. Gigue

La majeur

Manuscrit de Grüssau PL–Wu2008

Varsovie, Bibliothèque universitaire
PL-Wu RM 4140 (olim Mf. 2008)
Page 129

Voir le manuscrit de Munich D-Mbs5362, folio 62r : Gigue en La majeur (Mun81)

Voir le manuscrit de Grüssau PL-Wu2009, pages 188 et 189 : 17. Gigue en La majeur (PLWu2009_164)



17. Gigue

Handwritten musical score for a Gigue in 3/8 time. The score is written on a grand staff (treble and bass clefs) and includes fingerings, ornaments, and performance markings.

Measures 1-6: Treble clef, 3/8 time. Notes: e, r, e, r, e, r, r, r, e, r, e. Bass clef: a, a, a, a, a, a.

Measures 7-12: Treble clef, 3/8 time. Notes: r, r, r, r, e, r, r, a, a, e. Bass clef: a, a, 4, r, a, a, a.

Measures 13-18: Treble clef, 3/8 time. Notes: a, r, r, e, r, r, a, a, e, e. Bass clef: a, a, a, 4, r, a, a.

Measures 19-26: Treble clef, 3/8 time. Notes: r, r, a, r, r, r, r, a, e, r. Bass clef: a, a, a, a, a, a, a. Includes a repeat sign and a 6/6 time signature change.

Measures 27-34: Treble clef, 3/8 time. Notes: e, r, r, e, a, r, a, a, r, a, e, e, r, r. Bass clef: a, a, 4, r, a, a, a, a, a, a. Includes a 6/6 time signature change and a first ending bracket labeled (1*).

Measures 35-41: Treble clef, 3/8 time. Notes: r, r, r, a, r, a, e, r, e. Bass clef: a, a, a, 4, a, a, a. Includes a repeat sign and a boxed 'R' marking.

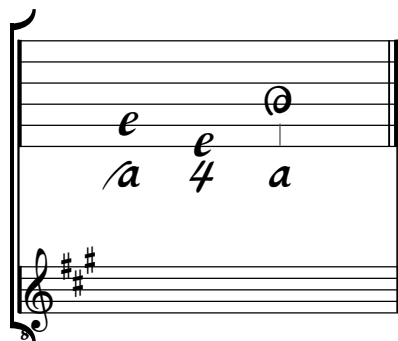
Measures 42-46: Treble clef, 3/8 time. Notes: r, a, a, r, r, a, r, a, e, e. Bass clef: 4, a, a, a, a, r, e, e. Ends with a double bar line and a decorative flourish.

1. Original : Fa dièse (b sur la chanterelle)

Tonalité : La majeur

Accord des basses du luth : 3 dièses

Scordature par octave



Accord des 11 chœurs du luth



