

Johann Christoph Hobach

(? - ?)

Ex Partibus

Mr. Jan Xtophori Hobach

Aria, Menuet, Fuga, Vivace

Ré majeur

Manuscrit de Grüssau PL-Wu2005

Bibliothèque universitaire de Varsovie

PL-Wu ms. RM 4138 (olim Ms. Mf. 2005)

Pages 58 & 59, 96 & 97



11

re^a e r e a r a

a a

4

13

aeer r r e r e a

a a

15

re^r e r e r a a a

a a a

17

g a g a g a g a e a e a e a

a a a a

19

g a e r r r e a r a

a a a a

(1*)

R

22

aeer r r e r e a

a a

forte

R

1. Original : pas d'indication rythmique, mais il manque un temps dans cette mesure.

Menuet

Mr. J.-C. H

Handwritten musical score for a Minuet in Sol. The score is written on a single staff with a treble clef and a 3/4 time signature. It consists of 24 measures, divided into systems of four measures each. The notation includes various note values (quarter, eighth, sixteenth notes), rests, and ornaments. The piece begins with a 3/4 time signature and a repeat sign at the end. The score is marked with measure numbers 5, 9, 13, 17, and 21. The notation includes various note values (quarter, eighth, sixteenth notes), rests, and ornaments. The piece begins with a 3/4 time signature and a repeat sign at the end.

*Ex Partibus Mr. Jan Xtophori Hobach.
plures foli 96 invenientur.*

1. Original : Sol (f sur le canto) x2

16

$\text{a} \text{ e} \text{ r} \text{ a} \text{ e} \text{ r} \text{ a} \text{ e} \text{ r}$
 $\text{a} \text{ a} \text{ a} \text{ a} \text{ a} \text{ a} \text{ a} \text{ a}$

19

$\text{a} \text{ e} \text{ r} \text{ a} \text{ r} \text{ a} \text{ e} \text{ r} \text{ a} \text{ a} \text{ a} \text{ a} \text{ a} \text{ e} \text{ r} \text{ e}$
 $\text{a} \text{ a} \text{ a} \text{ a} \text{ a} \text{ a} \text{ a} \text{ a} \text{ a} \text{ a} \text{ a} \text{ a}$

22

$\text{r} \text{ r} \text{ e} \text{ r} \text{ r} \text{ e} \text{ a} \text{ a} \text{ a} \text{ a} \text{ a} \text{ a} \text{ r} \text{ r} \text{ e} \text{ r} \text{ r} \text{ e}$
 $\text{a} \text{ a} \text{ a} \text{ a} \text{ a} \text{ a} \text{ a} \text{ a} \text{ a} \text{ a} \text{ a}$

24

$\text{e} \text{ e} \text{ r} \text{ r} \text{ e} \text{ a} \text{ e} \text{ r} \text{ a} \text{ a} \text{ a} \text{ r} \text{ e}$
 $\text{a} \text{ a} \text{ a} \text{ a} \text{ a} \text{ a} \text{ a} \text{ a} \text{ a} \text{ a}$

27

$\text{a} \text{ a} \text{ r} \text{ e} \text{ a} \text{ r} \text{ e} \text{ e} \text{ e} \text{ a} \text{ a} \text{ e} \text{ e} \text{ e} \text{ r} \text{ e}$
 $\text{a} \text{ a} \text{ a} \text{ a} \text{ a} \text{ a} \text{ a} \text{ a} \text{ a} \text{ a} \text{ a} \text{ a} \text{ a}$

31

$\text{e} \text{ e} \text{ r} \text{ h} \text{ i} \text{ g}' \text{ h} \text{ g} \text{ h} \text{ a} \text{ e} \text{ r} \text{ a} \text{ a} \text{ e}$
 $\text{a} \text{ a} \text{ a} \text{ a} \text{ a} \text{ a} \text{ a} \text{ a} \text{ a} \text{ a} \text{ a}$

.../...

35

e a e a e a k i k a h a k i k a h a h

b b ma ma a

39

k k i i k k m m o o

a a a ma 4 5 5 4 5 6 4 ma 4 5 ma

44

p p r r t t x x z a z a z a

ma 4 ma a ma ma a a a a a

49

k a a a a a a a a a a

pianissimè ma ma ma ma

52

k k i k i k k i i g i g h g g e g e

ma a a ma ma ma ma R

55

f e e r e r e e r r b r b r e e r e r

ma 4 ma 4 5 4 5 6

20

e e e e e e r r r r e e r a
a a a a 6 5 4 a

23

e e e e r a a e r e r a e
a a a a a r a a a a a a

26

r r r e f e r i a e r e r e a r e e r e a e r e
a a a a a a a a a a a a a a a a

30

e e r e a e r e e e r e r e r i a g a a g
a a a a a a a a a a a a a a a a

33

i i i i k k k k i i i i k k k k i i i i k i k
h h h h k k k k h h h h k k k k h h h h
a a a a a a a a a a a a a a a a

36

h r e r i a e r a g a g a g i i h h k k i i k k h h
a a a a a a a a a a a a a a a a

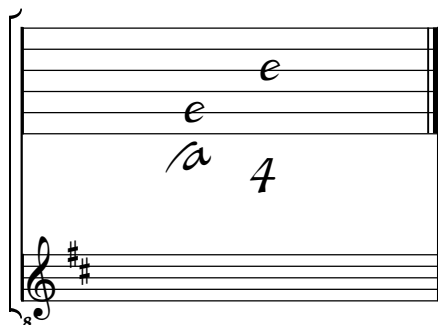
40

k k i i k i k h r e r i a e r i a g a a g
k k h h a a a a a a a a a a a a a a a a
a a a a a a a a a a a a a a a a

Tonalité : Ré majeur

Accord des basses du luth : 2 dièses

Scordature par octave



Accord des 13 chœurs du luth

