

*Johann Christoph Hobach*

(? - ?)

# Menuet et Gigue

*M<sup>r</sup>. J.-C. Hobach*

Fa majeur

*Luth à 11 chœurs*

Manuscrit de Grüssau PL-Wu2005

*Bibliothèque universitaire de Varsovie*

PL-Wu ms. RM 4138 (olim Ms. Mf. 2005)

*Page 53*





# Menuet

M<sup>r</sup>. J-C Hobach

3

5

10

16

21

# Gigue

M<sup>r</sup>. J-C Hobach

1. 1. 2. 2. 2. 2.

6 a e a r a a r a r a r a a a a r

8 e a a r a r a a a r

*Ma*

4. 2. 2. 2. 2. 2. 2. 2. 2. 2.

e r e a r a r a a a r a a a r a

a e a r a r a a a r a

*Ma*

8. 2. 2. 2. 2. 2. 2. 2.

a r r a r a r a e a e a r a

a a a a a a a a a a a a a

*Ma* *Ma* *Ma* 6

12. 2. 2. 2. 2. 2. 2. 2. 2. 2.

e a e a r a r a a r a a a a a r r a

a a a e a a a a a a a a a a a

*Ma*

17. 2. 2. 2. 2. 2. 2. 2. 2. 2.

e h h i k h f f h h f e e r r e r

a a a a a a a a a a a a a a a

*Ma* *Ma* *Ma* *Ma*

22

*a* *r* *a* *a* *r* *a* *r* *e* *a* *r* *e*  
*a* *r* *a* *r* *e* *r* *e* *a* *r* *a* *r* *e*  
*a* 4 *a* *a*

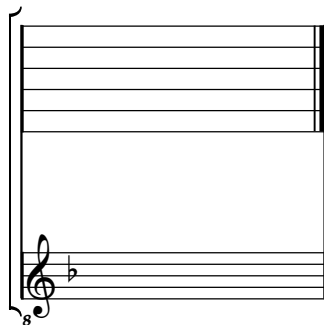
27

*a* *a* *a* *a*  
*a* *a* *a* *a*  
*a* *a*

# Tonalité : Fa majeur

*Accord des basses du luth : 1 bémol*

## *Scordature par octave*



## *Accord des 11 chœurs du luth*

Musical notation for the 11 chords of the lute. The top staff shows the fret positions for the 11 chords, and the bottom staff shows the corresponding bass line.