

Johann Christoph Hobach

Fuga

J-CraH 1742

Fa majeur

Manuscrits de Varsovie

Warszawa, Biblioteka Uniwersytecka w Warszawie

Gabinet Zbiorów Muzycznych

PL-Wu ms. RM 4138 (olim Ms. Mf. 2005)

Page 50

Pas de correspondance.



Fuga

dedicata da de Fridenbourg

J-CraH 1742

Liuto Solo

AD

3 a a a a r a a a r a a a r a a a a a a

8 a a a a a a a h h h f h a k h i h f a h a h*

14 a

22 a

29 a

36 h h h h f h f f a e r a a b a b a r a

41

r m r r m r r m r r m r

$r \flat a$		$a \textcircled{a} \flat a$	$r a r \textcircled{\flat} a$
$r a$	$\textcircled{\textcircled{\flat} a}$	$a / a / a$	$\text{//} a$
4			

45

r m r r m r r m r J J J J

$\textcircled{a} \textcircled{a} \textcircled{\textcircled{\flat}}$	$r a r$	$r a \textcircled{\textcircled{\flat}}$	ere a	$r a$	$f f$	$\textcircled{\textcircled{\flat}}$	$r r$	$g g$
$/ a$	a	a			4	4	4	4


52

$h h$	$h h h$	$h h$	$f f$	$a p a p$	$g g$	$\textcircled{\textcircled{\flat}}$	$r r$	$a a a$
$h h$	$g g g$	$f f$	$h h$	$h h$	$g g$		$r r$	\textcircled{a}
4	4	4	4	4	4	5	4	$/ a$

61

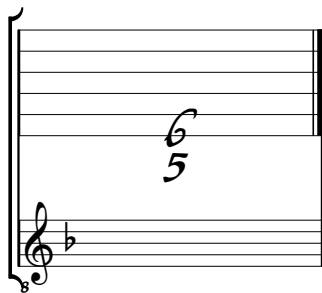
r r r r r J

$a a a$	$a a a$	$a a a$	$a a a$	$a r$	a
$a a \textcircled{\textcircled{\flat}}$	$a a \textcircled{\textcircled{\flat}}$	$a a a$	$a a a$	$a \flat r$	$\textcircled{\textcircled{\flat}}$
$/ a$	$a \textcircled{\textcircled{\flat}}$	$/ a$	$a \textcircled{\textcircled{\flat}}$	6 5 4	$/ a$



Tonalité : Fa majeur

Scordature par octave



Accord des 13 chœurs du luth



A musical staff with a treble clef and a flat sign (B-flat). The staff is empty except for the numbers 'a', 'a', 'a', 'a', 'a', 'a', 'a', 'a', 'a', 'a', 'a', 'a', 'a' written above the staff, indicating fret positions for the strings. Below the staff, the numbers '4 5 6' are written, indicating fret positions for the strings.