

[Compositeur anonyme]

Bourrée (Bourre)

Ex G Molli

Sol mineur

Manuscrit de Grüssau PL-Wu2004

Bibliothèque universitaire de Varsovie

PL-Wu ms. RM 4137 (olim Ms. Mf. 2004)

Folio 56v

Pas de correspondance



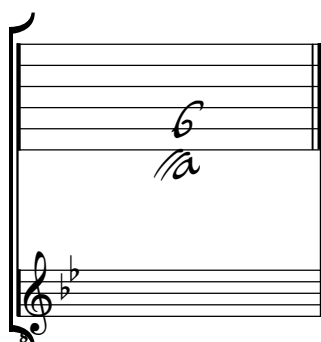
Bourrée (Bouree) Ex G Molli

Handwritten musical score for Bourrée (Bouree) Ex G Molli. The score is written on a single five-line staff and consists of 24 measures, divided into six systems of four measures each. The notation includes various note values (quarter, eighth, sixteenth, and dotted notes), rests, and dynamic markings such as *f*, *fx*, and *ff*. The piece begins in common time (C) and features several changes in time signature, including 4/4, 6/8, and 5/8. A repeat sign with first and second endings is present in the eighth measure. A rehearsal mark 'R' is located below the first measure of the fifth system. The score concludes with a double bar line and repeat dots.

Tonalité : Sol mineur

Accord des basses du luth : 1 bémol

Scordature par octave



Accord des 11 chœurs du luth



