

[Silvius Leopold Weiss]

(1687 - 16 oct. 1750)

Gigue (Guigue)

WeissSW86.10

Do majeur

Manuscrit de Grüssau PL-Wu2004

Bibliothèque universitaire de Varsovie

PL-Wu ms. RM 4137 (olim Ms. Mf. 2004)

Folio 56r

Pas de correspondance



Gigue (Guigue)

Handwritten musical score for Gigue (Guigue) in 3/8 time, featuring a 3/8 and 8/8 time signature. The score is written on a grand staff with treble and bass clefs. The melody is written in the treble clef, and the bass line is in the bass clef. The piece is in a major key and consists of 24 measures.

The score is divided into systems, with measure numbers 5, 10, 14, 18, and 23 indicated on the left. The notation includes various rhythmic values (quarter, eighth, and sixteenth notes), rests, and dynamic markings (f, a, a). The piece concludes with a repeat sign and a final cadence.

28

Handwritten annotations below the staff: *a*, *a*, *a*, *a*, *a*

33

Handwritten annotations below the staff: *a*, *a*, *a*, *a*, *a*

38

Handwritten annotations below the staff: *a*, *a*, *a*, *a*, *a*

43

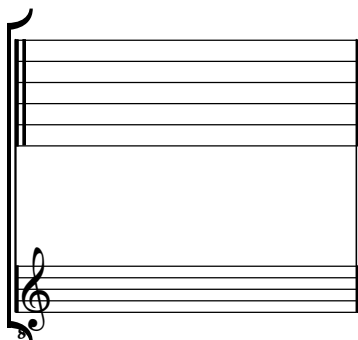
Handwritten annotations below the staff: *a*, *a*, *a*, *a*, *a*

4 4

Tonalité : Do majeur

Accord ordinaire du luth

Scordature par octave



Accord des 11 chœurs du luth

