

[Compositeur anonyme]

[5 pièces]

Bourrée (Bouree), Menuet, Sarabande,
Adieu, Bourrée (Bouree)

Ré mineur

Manuscrit de Grüssau PL-Wu2004

Bibliothèque universitaire de Varsovie

PL-Wu ms. RM 4137 (olim Ms. Mf. 2004)

Folios 49v à 50v

Pas de correspondance



[5 pièces en Ré mineur]

Bourrée (Bouree)

4

8

12

17

21

25

(1*)

(2*)

(3*)

(4*)

R

1. Original : Mi (c sur le canto)
2. Original : Fa (a sur le 8e chœur)
3. Original : Sol (c sur la chanterelle)
4. Original : Sol (c sur la chanterelle)

Menuet

3

5

9

14

19

24

29

(1*)

(2*)

R

Detailed description of the musical score: The score is for a Minuet in G minor, 3/4 time. It consists of 32 measures. The notation includes a treble clef, a 3/4 time signature, and various note values (quarter, eighth, sixteenth notes). The piece features several ornaments (trills and mordents) and dynamic markings (f, f). There are two first endings marked (1*) and (2*). The score ends with a repeat sign and a fermata. The key signature is one flat (B-flat).

1. Original : Sol (c sur la chanterelle)

2. Original : Si bémol et La (f sur la chanterelle et h sur le canto)

Sarabande

The musical score for 'Sarabande' consists of six systems of music, each with a single melodic line. The notation includes various ornaments (trills, mordents, grace notes) and rhythmic markings (3, 4, 6, 9). The piece is in 3/4 time, as indicated by the '3' at the beginning of the first system. The notes are primarily eighth and sixteenth notes, often beamed together. The score ends with a double bar line and repeat dots, followed by a decorative flourish.

1. Original : ornament absent

Adieu

The musical score for 'Adieu' is presented in four systems. The first system (measures 1-3) begins with a common time signature and a C-clef. The vocal line consists of quarter notes: G4, A4, G4, A4, B4, A4, G4. The piano accompaniment features a series of chords: F4, G4, A4, B4, A4, G4, F4. The second system (measures 4-5) continues the vocal line with quarter notes: G4, A4, G4, A4, B4, A4, G4. The piano accompaniment includes chords: F4, G4, A4, B4, A4, G4, F4. The third system (measures 6-8) shows the vocal line with quarter notes: G4, A4, G4, A4, B4, A4, G4. The piano accompaniment features a series of chords: F4, G4, A4, B4, A4, G4, F4. The fourth system (measures 9-11) concludes the piece with a double bar line and repeat signs. The vocal line includes quarter notes: G4, A4, G4, A4, B4, A4, G4. The piano accompaniment features a series of chords: F4, G4, A4, B4, A4, G4, F4. The score includes various musical notations such as notes, rests, ornaments, and dynamic markings.

1. Original : liaison absente

Bourrée (Bouree)

2

e a f e r a r a r a e

a a a a a a a a

4

a r a r e r e f e f a r h a

a a a a a a a a

7

a r e a a a a a a a a a a

a a a a a a a a

11

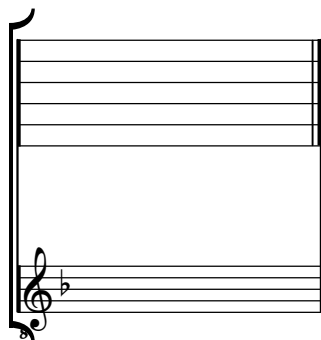
r f f r a a a a

a a a a

Tonalité : Ré mineur

Accord ordinaire du luth

Scordature par octave



Accord des 11 chœurs du luth

Musical notation for the 11-voice lute chord. The notation is written on a grand staff with two systems of five lines each. The top system is for the upper strings (1-5) and the bottom system is for the lower strings (6-1). The upper strings are marked with the letter 'a' above each line. The lower strings are marked with notes: the first string (6) has a quarter note 'a', the second string (5) has a quarter note 'a', the third string (4) has a quarter note 'a', the fourth string (3) has a quarter note 'a', the fifth string (2) has a quarter note 'a', and the sixth string (1) has a quarter note 'a'. The notes are written in a treble clef for the upper strings and a bass clef for the lower strings. The key signature is one flat (B-flat).

