

[Compositeur anonyme]

[2 pièces]

[Sans titre], Bourrée (Bourée)

Ré mineur

Manuscrit de Grüssau PL-Wu2004

Bibliothèque universitaire de Varsovie

PL-Wu ms. RM 4137 (olim Ms. Mf. 2004)

Folio 48r



[2 pièces en Ré mineur]

3

5

8

12

16

20

Treble clef: a a a | f e f f e f r a a | a r a
 Bass clef: a a | a a r | a r a

23

Treble clef: r r r r | f e f f e f e | r r r r
 Bass clef: r r | f e f e | r r

26

Treble clef: f e f f e f e | a r e | a
 Bass clef: a b a | a b a | a

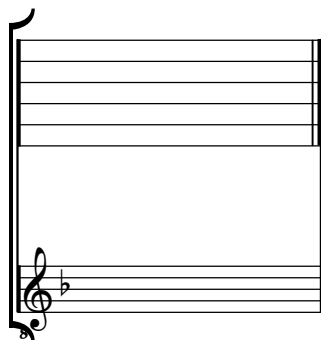
Bourrée (Bouree)

Musical score for Bourrée (Bouree) in Ré mineur. The score is written for piano and flute. It consists of 23 measures, divided into systems of four measures each, with the final system containing two measures. The time signature is 2/4. The key signature is one flat (Ré mineur). The score includes various musical notations such as notes, rests, slurs, and dynamic markings (e.g., *f*, *ff*). The piano part is written on a treble clef staff, and the flute part is written on an alto clef staff. The score concludes with a repeat sign and a decorative flourish.

Tonalité : Ré mineur

Accord ordinaire du luth

Scordature par octave



Accord des 11 chœurs du luth

Musical notation for the 11-voice lute chord. The top staff shows the fretting positions for the six strings, with the letter 'a' written above each string. The bottom staff shows the corresponding notes in a treble and bass clef, with a key signature of one flat (B-flat).

