

[Compositeur anonyme]

[3 pièces]

Menuet, Air et Double, Menuet et Double

Ré mineur

Manuscrit de Grüssau PL-Wu2004

Bibliothèque universitaire de Varsovie

PL-Wu ms. RM 4137 (olim Ms. Mf. 2004)

Folios 46r et 46v

Voir dans le manuscrit de Bruxelles B-Bc15, page 4 : Menuet (B-Bc15_1)



[3 pièces en Ré mineur]

Menuet

3

5

10

16

1. Liaison absente de la tablature originale.

Air

Musical score for 'Air' in C major, measures 1-8. The score is written on a grand staff with treble and bass clefs. The key signature is one sharp (F#). The time signature is common time (C). The melody is written in the treble clef, and the bass line is in the bass clef. The piece begins with a common time signature. The first measure contains a quarter note G4, a quarter note A4, and a quarter note B4. The second measure contains a quarter note C5, a quarter note B4, and a quarter note A4. The third measure contains a quarter note G4, a quarter note F#4, and a quarter note E4. The fourth measure contains a quarter note D4, a quarter note C4, and a quarter note B3. The fifth measure contains a quarter note A3, a quarter note G3, and a quarter note F#3. The sixth measure contains a quarter note E3, a quarter note D3, and a quarter note C3. The seventh measure contains a quarter note B2, a quarter note A2, and a quarter note G2. The eighth measure contains a quarter note F#2, a quarter note E2, and a quarter note D2. The score includes various musical notations such as slurs, ties, and dynamic markings. A repeat sign is present at the end of the eighth measure.

Double

Musical score for 'Double' in C major, measures 9-16. The score is written on a grand staff with treble and bass clefs. The key signature is one sharp (F#). The time signature is common time (C). The melody is written in the treble clef, and the bass line is in the bass clef. The piece begins with a common time signature. The first measure contains a quarter note G4, a quarter note A4, and a quarter note B4. The second measure contains a quarter note C5, a quarter note B4, and a quarter note A4. The third measure contains a quarter note G4, a quarter note F#4, and a quarter note E4. The fourth measure contains a quarter note D4, a quarter note C4, and a quarter note B3. The fifth measure contains a quarter note A3, a quarter note G3, and a quarter note F#3. The sixth measure contains a quarter note E3, a quarter note D3, and a quarter note C3. The seventh measure contains a quarter note B2, a quarter note A2, and a quarter note G2. The eighth measure contains a quarter note F#2, a quarter note E2, and a quarter note D2. The score includes various musical notations such as slurs, ties, and dynamic markings. A repeat sign is present at the end of the eighth measure.

Menuet

3

6

12

Double

17

22

27

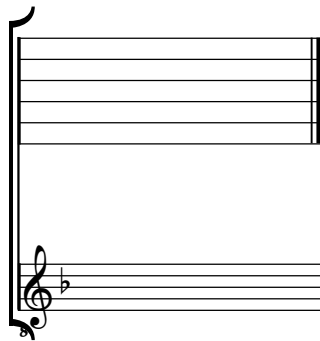
(1*)

1. Original : ornament absent

Tonalité : Ré mineur

Accord ordinaire du luth

Scordature par octave



Accord des 11 chœurs du luth



