

Compositeur anonyme

[Gigue et 2 menuets]

La majeur

Manuscrit de Grüssau PL-Wu2003

Bibliothèque universitaire de Varsovie

PL-Wu ms. RM 4136 (olim Ms. Mf. 2003)

Folios 19v - 20r

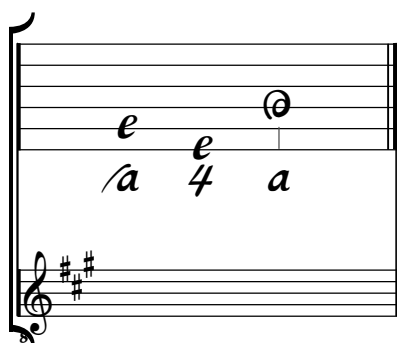
*Voir dans le manuscrit de Grüssau PL-Wu2005, pages 126 et 127, Gigue
et 2 menuets [PLWu2005_46]*



Tonalité : La majeur

Accord des basses du luth : 3 dièses

Scordature par octave



Accord des 13 chœurs du luth



[Gigue]

Handwritten musical score for a Gigue, consisting of seven systems of music. Each system includes a treble clef, a 3/8 time signature, and a key signature of one sharp (F#). The notes are written in a stylized, handwritten style, often with slurs and ornaments. The systems are numbered 1, 5, 10, 16, 21, 26, and 31. The score includes various musical notations such as slurs, ornaments, and dynamic markings like *ff*. A repeat sign is present at the end of the first system, and a boxed 'R' appears at the end of the sixth system. The piece concludes with a double bar line and a final flourish.

1. Original : Sol (c sur le 4e chœur)

Menuet

3 *r e ḍ e* | *r g e g* | *i h g* | *h*

4 *6 5 4* | *a a a* | *a a a* | *a*

5 *f h f g* | *e f e e* | *r e e r* | *a e* | *i*

a a | *a a a* | *4 a a* | *a* | *a*

10 *i g h h g i* | *g* | *g e g g e g* | *e* | *e ḍ e e ḍ e*

a | *a a a* | *a a* | *6*

15 *f r b r* | *e r b r* | *g g e g e g r* | *b r* | *r r b r*

a | *a* | *a b* | *5 a* | *a a a*

20 *r r b* | *ḍ r b* | *r* | *r r e r r e r* | *e*

4 5 a | *6 5 a a* | *4* | *a 4*

25 *b b ḍ e e ḍ b* | *ḍ* | *r e ḍ e* | *r g e g*

5 | *a a 4 5* | *6 5 4* | *a a a*

29 *i h g* | *h g k h a* | *e r a a r a ḍ* | *e*

a a a | *a a* | *a a a* | *a*

[Menuet]

3 *a* *b* *a* *a* 4 5

5 *b* *a* *a* *a* (1*) *b*

9 *a* *a* *a* *a*

13 *a* *a* *a* *a*

17 *a* *a* *a* *a* 4 5 *Da Capo*

1. Original : pas d'indication rythmique dans la mesure

