

***Melante (Georg Philipp Telemann)***

(14 mars 1681 - 25 juin 1767)

# Partie en G.

## ÿ Traduite d'A.

*A Deux Luths*

*Pour le Secondième*

N° 13

*Faite à 2 hautbois, viole discordée, taille et La Basse*

*Par L'Autheur Msr Melante*

Ouverture, Effronterie, Air, Rigidon, Menuete, Trio, Paÿsans,  
Angloise

Sol mineur

*Luth baroque à 11 chœurs*

**Les manuscrits de Grüssau/Krzeszów PL-Wu2001**

*Bibliothèque universitaire de Varsovie,*

*Cabinet des collections de musique*

Luth 2 : PL-Wu ms. RM 4135b (olim Ms. Mf. 2001b)

*Folios 49r. à 53r.*



# N° 13 - Partie en G ici traduite d'A

## *A deux Luths*

### Luth 2

## Ouverture

Musical score for Luth 2, Ouverture, measures 1-40. The score is written in G major (one sharp) and 3/4 time. It consists of seven staves of music. The first staff (measures 1-6) features a series of chords and a melodic line. The second staff (measures 7-11) continues the melodic and harmonic development. The third staff (measures 12-16) includes a first ending (1.) and a second ending (2.) leading to a repeat sign. The fourth staff (measures 17-23) contains a fermata over the first measure and a melodic line. The fifth staff (measures 24-29) features a melodic line with some grace notes. The sixth staff (measures 30-36) continues the melodic and harmonic progression. The seventh staff (measures 37-40) concludes the piece with a final melodic phrase.

44

51

57

63

70

75

80

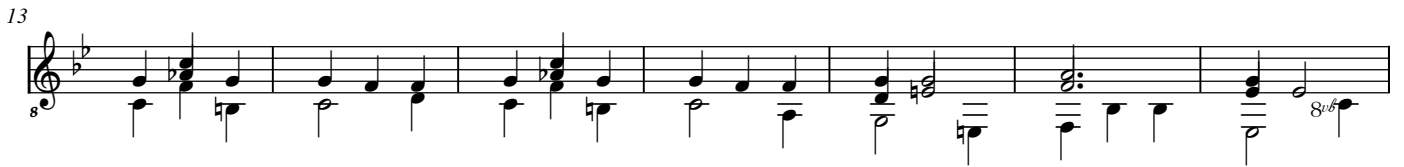
86



# Effronterie

Musical score for Effronterie, lute 2 part, measures 1-40. The score is written in G major (one sharp) and 3/8 time. It consists of seven systems of music, each starting with a measure number (1, 7, 14, 20, 26, 32, 38). The notation includes treble clef, a key signature of one sharp (F#), and a 3/8 time signature. The music features a mix of chords and melodic lines, with some measures containing accidentals (sharps and naturals) and dynamic markings (accents). The piece concludes with a double bar line and repeat dots at the end of the final system.

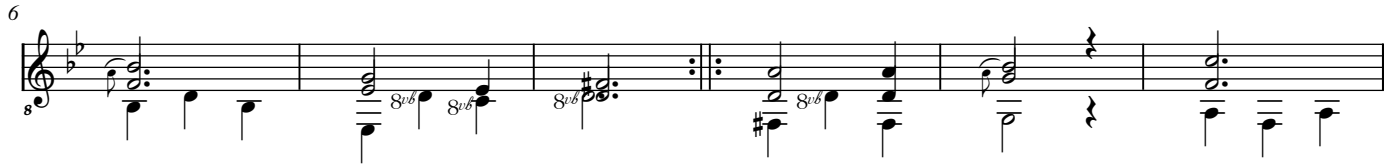
# Air



# Rigidon

The image displays a musical score for a piece titled "Rigidon". The score is written in G major (one sharp) and consists of six staves of music. The notation includes various rhythmic values, accidentals, and dynamic markings. The first staff begins with a treble clef and a key signature of one sharp (F#). The music is characterized by a mix of single notes and chords, with some notes marked with "8va" (octave up) and "8vb" (octave down). The second staff starts at measure 6 and includes a repeat sign. The third staff starts at measure 11 and features a complex rhythmic pattern with many beamed notes. The fourth staff starts at measure 16 and includes several "8vb" markings. The fifth staff starts at measure 21 and continues the melodic and harmonic development. The sixth staff starts at measure 27 and concludes the piece with a final cadence. The overall style is that of a Baroque or Classical era lute or guitar piece.

# Menuete



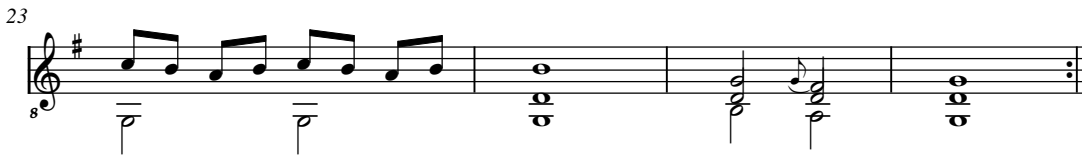
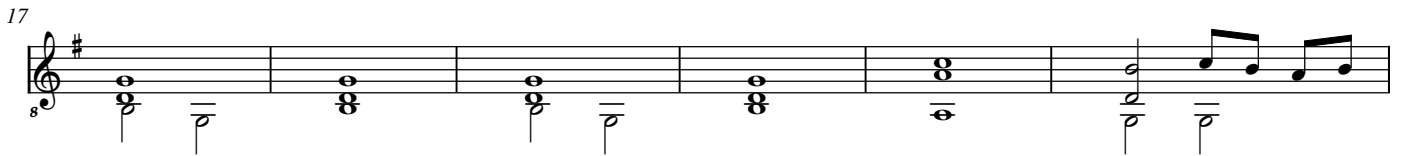
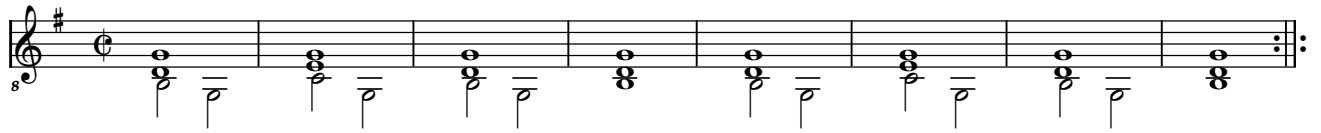


# Trio

Musical score for Trio, Menuete Commence, measures 1-13. The score is written in G major (one sharp) and 3/4 time. It consists of three staves of music. The first staff (measures 1-6) features a melody in the treble clef and a bass line with dotted notes. The second staff (measures 7-12) includes a repeat sign and a fermata. The third staff (measures 13) concludes the piece with a double bar line and repeat dots.

## *Menuete Commence*

# Paÿsans



# Angloise

The image displays a musical score for the piece 'Angloise' by Georg Philipp Telemann, specifically for lute 2. The score is written in G major and 3/4 time. It consists of six systems of music, each starting with a measure number: 1, 6, 10, 14, 19, and 23. The notation includes a treble clef, a key signature of one sharp (F#), and a 3/4 time signature. The music features a mix of eighth and sixteenth notes, often beamed together, and rests. Chords are indicated by vertical stems with flags. The piece concludes with a double bar line and repeat dots at the end of the sixth system.

