

Pierre Dubut

Dubut le fils (après 1642 ?-1700 ?)

Ennemond Gautier

(1575 - 17 décembre 1651)

Gigue

CLFDub N°125 (CLFVGa N°55)

La mineur

Manuscrit de Paris F-PnThII

Paris, Bibliothèque Nationale

F-Pn Rés. Vmc ms. 61 (olim: Bibl. Mad. Thibault)

Folio 47v

Cette gigue figure dans plusieurs manuscrits ; elle est souvent attribuée à Pierre Dubut (Gigue du Roy) mais aussi à Ennemond Gautier (Canaries du Vieux Gautier)



Gigue de Du But

Musical notation system 1 (measures 1-8). Includes a single melodic line with notes and a multi-staff system with rhythmic notation (a, r, e, p, a) and dynamic markings (ff, f, a).

Musical notation system 2 (measures 9-15). Includes a single melodic line and a multi-staff system with rhythmic notation (a, r, a, g, h) and dynamic markings (ff, f, a).

Musical notation system 3 (measures 16-22). Includes a single melodic line and a multi-staff system with rhythmic notation (g, h, f) and dynamic markings (ff, f, a).

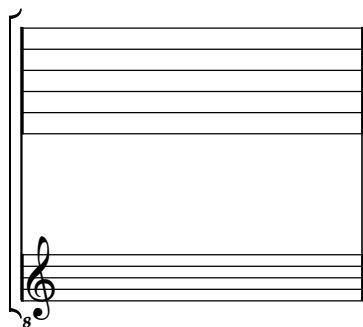
Musical notation system 4 (measures 23-29). Includes a single melodic line and a multi-staff system with rhythmic notation (a, r, e, p, a) and dynamic markings (ff, f, a).

Musical notation system 5 (measures 30-35). Includes a single melodic line and a multi-staff system with rhythmic notation (a, r, e, p, a) and dynamic markings (ff, f, a). Ends with a double bar line and a repeat sign.

Tonalité : La mineur

Accord ordinaire du luth

Scordature par octave



Accord des 11 chœurs du luth



