

[Compositeur anonyme]

Folies d'Espagne (Fol de Spagni)

Ré mineur

Manuscrit de Paris F-PnThII

Paris, Bibliothèque Nationale

F-Pn Rés. Vmc ms. 61 (olim: Bibl. Mad. Thibault)

Folios 2v, 3r et 3v



Folies d'Espagne (Fol de Spagni)

3 4

a a a e e e a a a f f f a a a

a a a r e a a 4 a a a a

6

f f f a a a r r a e r a r a a a e e e

4 a a a a a a a a r e

11

a a a f f f a a e r r a r a a r r a e a e a

a a a a a a a a a a a a a

17

a a e a r r a e r e a r e a r a r e a r a r a e r r a

a a a a a a a a a a a a a

22

r a r r a r a e a r r a e r a r a r a e a r r a e r e a r e

a a a a a a a a a a a a a

27

a r a r e a r a r e a r a a e r r a e a e a

a a a a a a a a a a a a a

33

Handwritten musical notation for measures 33-37. The notes are *a e a r a a e r e e a e a e a r a r a r a a*. The bass line includes a 4-measure rest and a fermata.

38

Handwritten musical notation for measures 38-43. The notes are *r a r a r a e r e e a e a e r a r a e r e a e a e r a r a*. The bass line includes a 4-measure rest and a fermata.

44

Handwritten musical notation for measures 44-48. The notes are *r a r a r a r a a r a e a e a f*. The bass line includes a 4-measure rest and a fermata.

49

Handwritten musical notation for measures 49-53. The notes are *a e a r a r e r e e a e r a e a r a r r a r a r a r a r a r a r a r a r*. The bass line includes a 4-measure rest and a fermata.

54

Handwritten musical notation for measures 54-59. The notes are *r a r a r r a e a r i a e r a r a r a e a r a r e r e e a e r a e a r a r*. The bass line includes a 4-measure rest and a fermata.

60

Handwritten musical notation for measures 60-64. The notes are *r a r a r r a r a e r a r a r a a r a e a e a f*. The bass line includes a 4-measure rest and a fermata.

.../...

65

71

76

81

87

93

1. Original : Ré (a sur le 2e chœur)
 2. Original : Ré (a sur le 2e chœur)

97

a a r | *e r e* | *a a r* | *r i a r* | *a a r* | *r a r*
a | *a* | *a* | 4 | *a* | 4

103

a a r | *e r e* | *a a r* | *e r e* | *a a r* | *r a r* | *a a r*
a | *a* | *a* | *a* | *a* | 4 | *a*

110

r a a | *r i a e* | *a e* | *a a p e r i a* | *e a r e a*
a | *a* | *a* | *a* | *a*

115

a a p e r i a | *r e a r e* | *a a e r i a* | *r r r a r* | *a a p e r i a*
a | *a* | *a* | *a* | *a*

120

e r a r a | *a a p e r i a* | *e a r e a* | *a a p e r i a* | *r e a r e*
a | *a* | *a* | *a* | *a*

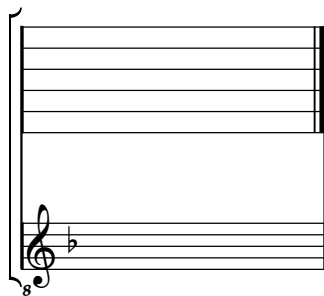
125

a a e r i a | *r a a* | *r i a e* | *a e*
a | *a* | *a* | *a*

Tonalité : Ré mineur

Accord ordinaire des basses du luth

Scordature par octave



Accord des 11 chœurs du luth

