

*[Compositeur anonyme]*

# Menuet

Fa majeur

Manuscrit de Paris F-PnThII

*Paris, Bibliothèque Nationale*

F-Pn Rés. Vmc ms. 61 (olim: Bibl. Mad. Thibault)

*Folio 42r*



# Menuet

The image displays a musical score for a Minuet in F major, organized into five systems. Each system consists of a single staff with notes, rests, and fingerings. The notes are written in a cursive style, and the rests are marked with 'a' or 'r'. The score is divided into measures by vertical bar lines. The first system starts with a 3/4 time signature. The second system begins with a measure number '5'. The third system begins with a measure number '8' and includes first and second endings. The fourth system begins with a measure number '12'. The fifth system begins with a measure number '16' and includes first and second endings. The score concludes with a decorative flourish.

3  
a a //a //a a //a //a 4

5  
a a //a //a a //a //a 4  
1. h h f h f

8  
2. h f h f h f a h f f, a e  
//a 4 a //a //a

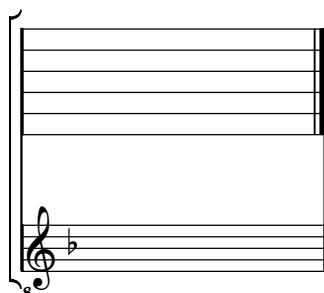
12  
4 a a //a //a a //a 4

16  
1. a f h f  
2. a  
a

# Tonalité : Fa majeur

*Accord ordinaire des basses du luth*

## *Scordature par octave*



## *Accord des 11 chœurs du luth*

Musical notation for the 11-voice chord of the lute. The notation consists of two staves. The upper staff has six lines, with the notes 'a', 'a', 'a', 'a', 'a', 'a' written above the lines. The lower staff has a treble clef and a bass clef, with a flat symbol (b) below the treble clef. The notes are: G4, A4, B4, C5, D5, E5, F5, G5, A5, B5, C6. The notes are written as quarter notes, with the final note (C6) followed by a '4' indicating a fourth.

