

[Jacques Gallot]

(vers 1625 - après 1690)

[arrangement] par Charles Mouton

(vers 1626 - vers 1699)

Tombeau de Madame de Fontange par Mons. Mouton.

Sol mineur

Manuscrit de Paris F-PnThII

Paris, Bibliothèque Nationale

F-Pn Rés. Vmc ms. 61 (olim: Bibl. Mad. Thibault)

Folio 40v

Voir dans le manuscrit de Berlin D-Bsa4060, pages 382 et 383 (folios 170v et 171r), Lamentation de Mad: la Duchesse de Fontange p[ar] Mons. Gallot (DBsa4060_187)



Tombeau de Madame de Fontange ^(1*) par Mons. Mouton.

Handwritten musical score for 'Tombeau de Madame de Fontange' by Mouton. The score is written on a single staff with a treble clef and a common time signature (C). It consists of 12 measures, grouped into four systems of three measures each. The notation includes various rhythmic values (quarter, eighth, sixteenth notes), rests, and dynamic markings such as 'f' (forte) and 'e' (euphonio). There are also some unusual symbols like 'a', 'r', and 'e' with subscripts. The piece ends with a double bar line and repeat dots.

1. Original : Fantange

12

4 *f f f f f f e f*
 3 *f f f f f f*
 3 *g f f h e f f f f*
 4 *f f f f*
 3

14

2 *e e e e e e e e*
 3 *f f f e e*
 4 *g e e*
 3 *f f f e e a f a f*
a a a

16

g a a a
a r e a r e
a a a a a a a

18

r r e e a a a a
a r e e a a a a
a a a a a a a

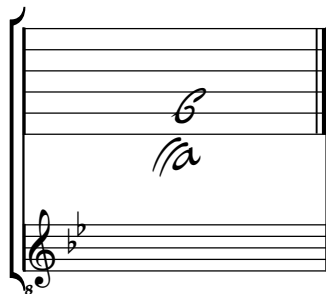
20

a r r r a r e e e e e
e e e e e e e e
a a e e e e

Tonalité : Sol mineur

Accord des basses du luth : 1 bémol

Scordature par octave



Accord des 11 chœurs du luth

