

[Compositeur anonyme]

Rondeaux

Fa majeur

Manuscrit de Paris F-PnThII

Paris, Bibliothèque Nationale

F-Pn Rés. Vmc ms. 61 (olim: Bibl. Mad. Thibault)

Folios 39v et 40r



Rondeau (Rondeaux)

[Accord] Ordinair[e].

Musical notation for the first system, measures 1-5. The staff shows a 3/4 time signature and a key signature of one flat. The notes are: G4, A4, B4, G4, F4, E4, D4, C4. The guitar accompaniment includes a 3/4 time signature, a key signature of one flat, and a 4-measure rest at the end.

Musical notation for the second system, measures 6-11. The staff shows a key signature of one flat. The notes are: D4, C4, B3, A3, G3, F3, E3, D3. The guitar accompaniment includes a key signature of one flat and a double bar line with repeat dots.

Musical notation for the third system, measures 12-15. The staff shows a key signature of one flat. The notes are: C4, B3, A3, G3, F3, E3, D3. The guitar accompaniment includes a key signature of one flat and a double bar line with repeat dots. The text "Da Capo" is written to the right.

Musical notation for the fourth system, measures 16-21. The staff shows a key signature of one flat. The notes are: D4, C4, B3, A3, G3, F3, E3, D3. The guitar accompaniment includes a key signature of one flat and a double bar line with repeat dots. The text "(1*)" is written below the staff.

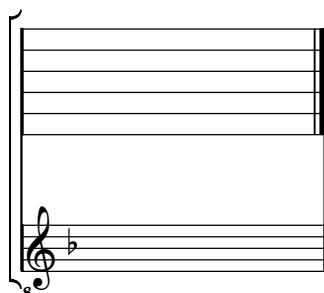
Musical notation for the fifth system, measures 22-25. The staff shows a key signature of one flat. The notes are: D4, C4, B3, A3, G3, F3, E3, D3. The guitar accompaniment includes a key signature of one flat and a double bar line with repeat dots. The text "Da Capo" is written to the right, followed by a decorative floral ornament.

1. Original : Fa (a sur la chanterelle)
 2. Original : La (e sur la chanterelle)

Tonalité : Fa majeur

Accord ordinaire des basses du luth

Scordature par octave



Accord des 11 chœurs du luth

Musical notation for the 11-voice lute chord. The notation is written on two staves. The top staff has six lines, and the bottom staff has five lines. The top staff contains the notes 'a a a a a a' on the first line, followed by 'a a a a a a' on the second line, and 'a a a a a a' on the third line. The bottom staff contains the notes 'a a a a a a' on the first line, followed by 'a a a a a a' on the second line, and 'a a a a a a' on the third line. The notes are written in a cursive style. A treble clef is positioned below the bottom staff, with an octave sign (8) below it. A single flat (Bb) is placed on the first line of the treble clef. The notation ends with a double bar line.

