

[Compositeur anonyme]

[(début du XVIII^e siècle)]

[Partie en trio]

Flauto, Violoncello, **Lieuto**

Fa majeur

Manuscrit de Paris F-PnThII

Paris, Bibliothèque Nationale

F-Pn Rés. Vmc ms. 61 (olim: Bibl. Mad. Thibault)

Folios 29v à 38v



Entrée

Lieuto

1. a a a a ha | r r r r e r | e r a a r e

a a a a | b a 4 | a a a a

4

r a r a r e r a | a a r a r e r e r a

a 4 a a a

6

a r r a r r a r r | e r b a r a a a

a a r a | a a a a

8

a r a a r r | r r a r r | r a a r a

a 4 a a | 4 a a a

11

h h h k h | e r a e | r r r e f e r a | a r a f

4 a a 4 | a a a a | a a e a | a r a a

15

e a r r r e r | b r a e e r e | f a r e r a

a a a e | a r e a | a a r r

18

Handwritten musical notation for measures 18-20. The notation includes notes with stems and flags, and letters 'a', 'r', 'h', 'e', 'a', 'b', 'r' written below the notes. There are repeat signs and a double bar line with a repeat sign.

21

Handwritten musical notation for measures 21-23. The notation includes notes with stems and flags, and letters 'a', 'r', 'a', 'a', 'a', 'a', 'a', 'a' written below the notes. There are first and second endings, a double bar line with repeat signs, and a decorative flourish at the end.

Gavotte

Lieuto

1

3

6

8

11

14

16

16

f *h* *h* *h* *h* *f* *h* *h* *h* *f* *h* *h* *h*

f *h* *h* *h* *f* *h* *h* *h*

f *ff* *ff* *ff*

h *e* *a* *a* *a* *a*

f *ff* *ff* *ff*

18

18

h *a* *a* *a* *a* *a* *r* *r* *r* *e* *e*

h *a* *a* *a* *a* *a* *r* *r* *r* *e* *e*

h *a* *a* *a* *a* *a* *r* *r* *r* *e* *e*

h *a* *a* *a* *a* *a* *r* *r* *r* *e* *e*

h *a* *a* *a* *a* *a* *r* *r* *r* *e* *e*

20

20

e *a* *f* *f* *f* *f* *r* *a* *r* *r* *a*

e *a* *f* *f* *f* *f* *r* *a* *r* *r* *a*

e *a* *f* *f* *f* *f* *r* *a* *r* *r* *a*

e *a* *f* *f* *f* *f* *r* *a* *r* *r* *a*

e *a* *f* *f* *f* *f* *r* *a* *r* *r* *a*

Menuet (Minuete)

Lieuto

3

6

4

11

4

17

4

23

4

28

4

Bourrée (Bourée)

Lieuto

4

7

11

15

19

Gigue

Lieuto

3
8

a h f h f h r a r a a r

a a 4 a a

5

a r a r a r a r a r a r a r a r

a a r a

10

r r r a a r r r r a r a r r

a r a a a a a

15

a a a a r r a r a r a a b a

a a a a 4 a a a a

20

a a f e r a r a e a r a r e r e f a

a a a r e a a

26

e e r r a r a r e a b a b r e r e a

e a a a a a a a

31

Handwritten musical notation for measures 31-35. The top staff contains notes with slurs and accents. The bottom staff contains notes with slurs and accents. Dynamics include *f*, *ff*, and *mf*.

36

Handwritten musical notation for measures 36-40. The top staff contains notes with slurs and accents. The bottom staff contains notes with slurs and accents. Dynamics include *f* and *ff*.

41

Handwritten musical notation for measures 41-44. The top staff contains notes with slurs and accents. The bottom staff contains notes with slurs and accents. Dynamics include *f*.

45

Handwritten musical notation for measures 45-47. The top staff contains notes with slurs and accents. The bottom staff contains notes with slurs and accents. Dynamics include *f*.

48

Handwritten musical notation for measures 48-50. The top staff contains notes with slurs and accents. The bottom staff contains notes with slurs and accents. Dynamics include *f*. The piece ends with a decorative flourish.

Menuet (Minuet)

Lieuto

3

5

4

9

4

14

4

19

4

24

4

29

Handwritten musical notation for measures 29-32. The top staff contains notes with slurs and dynamic markings (f, h). The bottom staff contains notes with slurs and dynamic markings (a). Measure numbers 4, 4, and a are indicated below the staff.

33

Handwritten musical notation for measures 33-35. The top staff contains notes with slurs and dynamic markings (a, r, a). The bottom staff contains notes with slurs and dynamic markings (a). Measure numbers 4 and a are indicated below the staff. The piece ends with a double bar line and a decorative flourish.

Echo

Lieuto

3

5

10

16

21

25

31

4

4

4

4

37

Handwritten musical notation for measures 37-42. The notation includes a treble clef, a key signature of one flat (F major), and a series of notes with various articulations (accents, slurs, fermata). The bass line includes chords and rests.

43

Handwritten musical notation for measures 43-47. The notation includes a treble clef, a key signature of one flat (F major), and a series of notes with various articulations (accents, slurs, fermata). The bass line includes chords and rests.

48

Handwritten musical notation for measures 48-52. The notation includes a treble clef, a key signature of one flat (F major), and a series of notes with various articulations (accents, slurs, fermata, triplet). The bass line includes chords and rests.

53

Handwritten musical notation for measures 53-57. The notation includes a treble clef, a key signature of one flat (F major), and a series of notes with various articulations (accents, slurs, fermata). The bass line includes chords and rests.

58

Handwritten musical notation for measures 58-62. The notation includes a treble clef, a key signature of one flat (F major), and a series of notes with various articulations (accents, slurs, fermata). The bass line includes chords and rests.

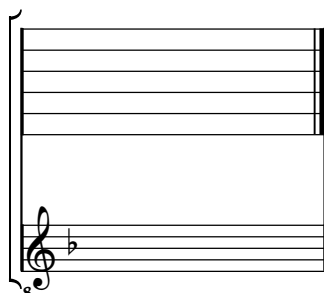
63

Handwritten musical notation for measures 63-65. The notation includes a treble clef, a key signature of one flat (F major), and a series of notes with various articulations (accents, slurs, fermata). The bass line includes chords and rests. The piece concludes with a double bar line and a decorative flourish.

Tonalité : Fa majeur

Accord ordinaire des basses du luth

Scordature par octave



Accord des 11 chœurs du luth

