

[Compositeur anonyme]
(2^e partie du XVII^e siècle)

[2 pièce]

Prelude, Allemande (Alemand)

Fa majeur

Manuscrit de Paris F-PnThII

Paris, Bibliothèque Nationale

F-Pn Rés. Vmc ms. 61 (olim: Bibl. Mad. Thibault)

Folio 1v



Prelude

(1*)

1. Original : pas d'indication rythmique (x2)

Allemande (Alemand)

Handwritten musical notation for the first system of the Allemande. It consists of a single staff with a common time signature 'C'. The notes are: a, a, r, r, a, r, e, a, a, a, a, a, a, a. There are various ornaments and slurs above and below the notes.

Handwritten musical notation for the second system, starting at measure 4. It consists of a single staff with a common time signature 'C'. The notes are: a, a, a, a, a, a, a, a, a, a, a, a, a, a. There are various ornaments and slurs above and below the notes.

Handwritten musical notation for the third system, starting at measure 8. It consists of a single staff with a common time signature 'C'. The notes are: a, a, a, a, a, a, a, a, a, a, a, a, a, a. There are various ornaments and slurs above and below the notes.

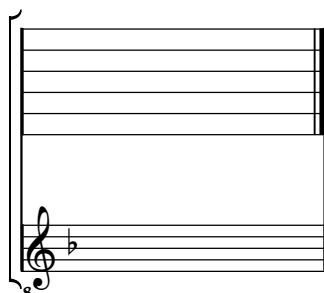
Handwritten musical notation for the fourth system, starting at measure 12. It consists of a single staff with a common time signature 'C'. The notes are: a, a, a, a, a, a, a, a, a, a, a, a, a, a. There are various ornaments and slurs above and below the notes.

Handwritten musical notation for the fifth system, starting at measure 16. It consists of a single staff with a common time signature 'C'. The notes are: e, a, a, a, a, a, a, a, a, a, a, a, a, a. There are various ornaments and slurs above and below the notes. The system ends with a decorative flourish.

Tonalité : Fa majeur

Accord ordinaire des basses du luth

Scordature par octave



Accord des 11 chœurs du luth

