

Pierre DuBut (le père ?)

(161.? - 167.)

[2 pièces]

Allemande(Allemand)

Courante (Courant)

CLFDub N° 25, 38

Ré mineur

Manuscrit de Paris F-PnThII

Paris, Bibliothèque Nationale

F-Pn Rés. Vmc ms. 61 (olim: Bibl. Mad. Thibault)

Folio 1r

*Voir dans le manuscrit de Berlin D-Bsa4060, pages 180 à 185 (folio 83v à 86r,
La Favorite Courante de Mons: Dubut ou Courante d'Amour de Mons Gautier
(DBsa4060_94)*

*Cette courante est attribuée à Du But le Père dans le manuscrit de Besançon
"Vaudry de Saizenay I", page 4.*

*L'Allemande est attribuée à Vincent (Vinsan) dans le manuscrit Panmure
House Music Book Nr.4 (GB-En Ms. 9451)*



[2 pièces]

CLFDub N°25

Allemande (Allemand)

1 2 3 4

Handwritten musical notation for measures 1-4. Measure 1: C-clef, common time, notes a, a, a. Measure 2: notes a, a, a, r, e, a, a. Measure 3: notes a, a, a, r, e, a, a. Measure 4: notes a, a, e, a, r, e, r, a. A double bar line with repeat dots is at the end of measure 4.

4

Handwritten musical notation for measures 5-8. Measure 5: notes a, r, a, a, a, b. Measure 6: notes r, r, a, a, r, a, a. Measure 7: notes a, a, a, r, e, a, a. Measure 8: notes a, r, e, e, a, r, e, e. A double bar line with repeat dots is at the end of measure 8.

7

Handwritten musical notation for measures 9-12. Measure 9: notes r, r, e, e, a, a, a, a. Measure 10: notes a, r, a, r, a, r, a, a. Measure 11: notes r, r, a, a, r, a, a, a. Measure 12: notes a, a, a, b, a, r, r, a. A double bar line with repeat dots is at the end of measure 12.

11

Handwritten musical notation for measures 13-16. Measure 13: notes b, a, r, a, b, a, a, a. Measure 14: notes r, r, a, r, a, b, a, a. Measure 15: notes a, r, e, a, a, a, a, r. Measure 16: notes r, a, r, e, r, a, r, a. A double bar line with repeat dots is at the end of measure 16.

15

Handwritten musical notation for measures 17-18. Measure 17: notes a, a, a, a. Measure 18: notes a, a, a, a. A double bar line with repeat dots is at the end of measure 18.

Courante (Courant)

♪ ♩ ♩ ♩ ♩ ♩ ♩ ♩ ♩ ♩ ♩

3	a	a	6a	r	a	a	r	a	a	f	ρ	a	6	6	6	ρ	
4		a	a	r	a	a	r	a	a	a	a	a	a				a

tr *a* *a*

6 ♩ ♩ ♩ ♩ ♩ ♩ ♩ ♩ ♩ ♩

a	r	a	r	a	ρ	e	r	a	a	a	ρ	r	e	r	e	a	r
a					a	r	r	a	a	a							

tr 4 *a*

12 ♩ ♩ ♩ ♩ ♩ ♩ ♩ ♩ ♩ ♩

a	:	:	r	r	e	e	a	r	a	ρ	ρ	r	e	a	r	a	ρ
e	:	:		e			a	a									
:	:	:		a			a	a									

a *a* 4 *tr* *tr* *tr*

18 ♩ ♩ ♩ ♩ ♩ ♩ ♩ ♩ ♩ ♩

ρ	r	a	e	f	f	f	ρ	r	ρ	a	ρ	ρ	ρ	6	a	a	ρ	6	a
a			a	e	e	e		a											

a *a* *a* 4 *tr*

24 ♩ ♩ ♩ ♩ ♩ ♩ ♩ ♩ ♩ ♩

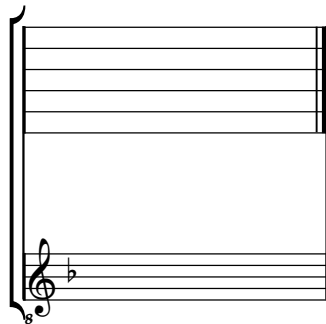
6	6	6	a	a	ρ	r	a	e	a	e	a	a	a	:	:	:	:	:	:
a				a			a												

a *a* *a* *tr*

Tonalité : Fa majeur

Accord ordinaire des basses du luth

Scordature par octave



Accord des 11 chœurs du luth

