

[Compositeur anonyme]
[(fin du XVII^e - début du XVIII^e siècle)]

Menuet (Minuet)

Fa majeur

Manuscrit de Paris F-PnThII

Paris, Bibliothèque Nationale

F-Pn Rés. Vmc ms. 61 (olim: Bibl. Mad. Thibault)

Folio 6r



Menuet (Minuet)

3

1 2 3 4 5 4 3 2 1

5

1 2 3 4 5 4 3 2 1 2 3 4 5 4 3 2 1

9

1 2 3 4 5 4 3 2 1 2 3 4 5 4 3 2 1

13

4 3 2 1 2 3 4 5 4 3 2 1 2 3 4 5 4 3 2 1

17

1 2 3 4 5 4 3 2 1 2 3 4 5 4 3 2 1

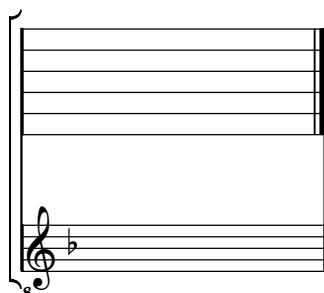
21

1 2 3 4 5 4 3 2 1 2 3 4 5 4 3 2 1

Tonalité : Fa majeur

Accord ordinaire des basses du luth

Scordature par octave



Accord des 11 chœurs du luth

Musical notation for the 11-voice chord of the lute. The notation consists of two staves. The top staff has six lines, with the notes 'a', 'a', 'a', 'a', 'a', 'a' written above the lines. The bottom staff has five lines, with the notes 'a', 'a', 'a', 'a', 'a' written below the lines. A treble clef is positioned below the bottom staff, with an octave sign (8) below it. A flat symbol (b) is placed below the treble clef, indicating the key signature of F major. The notation ends with a double bar line.

