

**[Johann Antonin Losy von Losinthal]**

*[(autour de 1650 - 22 août 1721)]*

# Menuet (Minuet)

(LosyV N°31 - LosyV N°104)

Fa majeur

Manuscrit de Paris F-PnThII

*Paris, Bibliothèque Nationale*

F-Pn Rés. Vmc ms. 61 (olim: Bibl. Mad. Thibault)

*Folio 4v*



# Menuet (Minuet)

Musical notation for the first system (measures 1-3). The music is in 3/4 time. The upper staff contains a melody starting with a quarter note 'e', followed by a beamed eighth-note pair 'e-r', and another quarter note 'e'. The lower staff contains a bass line with a half note 'a' in the first measure, and two half notes 'a' in the second and third measures. The first measure is marked with a '3' and a fermata over the 'a'. The second and third measures are marked with a double bar line and a fermata over the 'a's.

Musical notation for the second system (measures 4-8). The upper staff continues the melody with a quarter note 'a', followed by a beamed eighth-note pair 'e-e', a quarter note 'e', a quarter note 'r', a quarter note 'e', a quarter note 'a', a beamed eighth-note pair 'r-a', and a quarter note 'a'. The lower staff contains a bass line with a half note 'a' in the first measure, and two half notes 'a' in the second and third measures. The first measure is marked with a '4' and a fermata over the 'a'. The second and third measures are marked with a double bar line and a fermata over the 'a's. The fourth measure is marked with a '4' and a fermata over the 'a'. The system ends with a double bar line and repeat dots.

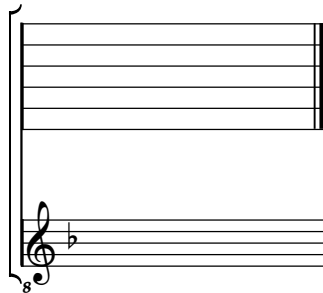
Musical notation for the third system (measures 9-13). The upper staff contains a melody starting with a quarter note 'a', followed by a beamed eighth-note pair 'a-a', a quarter note 'a', a quarter note 'a', a quarter note 'a', a quarter note 'r', a quarter note 'a', and a quarter note 'a'. The lower staff contains a bass line with a half note 'a' in the first measure, and two half notes 'a' in the second and third measures. The first measure is marked with a '4' and a fermata over the 'a'. The second and third measures are marked with a double bar line and a fermata over the 'a's. The fourth measure is marked with a '4' and a fermata over the 'a'. The system ends with a double bar line and repeat dots.

Musical notation for the fourth system (measures 14-16). The upper staff contains a melody starting with a quarter note 'a', followed by a quarter note 'a', a quarter note 'a', a quarter note 'a', a quarter note 'a', a quarter note 'r', and a quarter note 'a'. The lower staff contains a bass line with a half note 'a' in the first measure, and two half notes 'a' in the second and third measures. The first measure is marked with a '4' and a fermata over the 'a'. The second and third measures are marked with a double bar line and a fermata over the 'a's. The system ends with a double bar line, repeat dots, and a decorative flourish.

# Tonalité : Fa majeur

*Accord ordinaire des basses du luth*

## *Scordature par octave*



## *Accord des 11 chœurs du luth*



