

*Silvius Leopold Weiss*

(1687 - 16 oct. 1750)

# Fuga

WeissSW48\*

Ré majeur

**Manuscrit de Paris F-PnThI**

*Paris, Bibliothèque Nationale*

F-Pn Rés. Vma ms. 1213 (olim : Bibl. Mad. Thibault)

*Weiss à Rome*

*Pages 15 et 16*

*Voir dans le manuscrit d'Haslemere GB-HAB2, pages 75 et 76, la Fuga  
par Weiss en Ré majeur. [Has52b]*



# Fuga

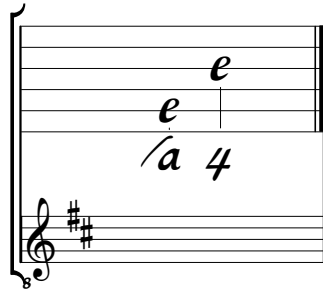
The image displays a musical score for a piece titled "Fuga" by Silvius Leopold Weiss. The score is presented in a system of six staves, each representing a measure of music. The notation includes rhythmic symbols (such as 'r' for eighth notes and 'e' for sixteenth notes) and letter-based tablature (using 'a' for the fifth string and 'r' for the fourth string). Above each staff, there are rhythmic markings: 'r' for eighth notes and 'm' for sixteenth notes. The score is divided into two systems of three staves each. The first system covers measures 1-2, the second system covers measures 3-4, the third system covers measures 5-6, the fourth system covers measures 7-8, the fifth system covers measures 9-10, the sixth system covers measures 11-12, and the seventh system covers measures 13-14. The notation includes various musical symbols such as slurs, ties, and dynamic markings like 'f' (forte). There are also some specific annotations like '(1\*)', '(2\*)', and '(3\*)' at the bottom of the staves.

1. Tablature originale : Fa bécarré (a sur la chanterelle).  
 2. Note absente de la tablature originale.  
 3. Tablature originale : Sol (c sur le 4ème chœur).



# Tonalité et accord du luth : Ré majeur.

## *Scordature par octave*



## *Accord des 13 chœurs du luth*

