

[Compositeur anonyme]

[2 pièces]

Bouree, Prælud:

Do majeur

Manuscrit de New York US-NYpMYO

The New York Music Library

US-NYp ms. Music Reserve *MYO

Folios 5v. et 6r.



Prælud:

Handwritten musical notation for the first system of the Prælud. It consists of three staves. The top staff has a treble clef and a common time signature. The middle staff has a bass clef. The bottom staff has a bass clef. The notation includes various rhythmic values (quarter, eighth, sixteenth notes), rests, and accidentals. A fermata is placed over the first note of the top staff. A box encloses a group of notes in the middle staff, with a circled asterisk (1*) below it. A '4' is written below the bottom staff, indicating a measure rest.

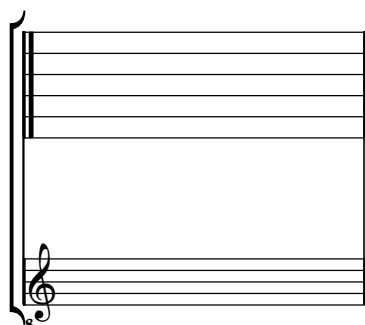
Handwritten musical notation for the second system of the Prælud. It consists of two staves. The top staff has a treble clef and a common time signature. The bottom staff has a bass clef. The notation includes various rhythmic values, rests, and accidentals. A fermata is placed over the first note of the top staff. A '4' is written below the bottom staff, indicating a measure rest. The system ends with a double bar line and a decorative flourish.

1. Original : Fa dièse et Si (d sur le 4e chœur et c sur le 3e chœur)

Tonalité : Do majeur

Accord ordinaire du luth

Scordature par octave



Accord des 11 chœurs du luth

