

[Compositeur(s) anonyme(s)]

[3 bourrées]

Boure, Bouree, Buore

Fa majeur

Manuscrit de New York US-NYpMYO

The New York Music Library

US-NYp ms. Music Reserve *MYO

Folios 96v. à 97v.



Boure

Handwritten musical score for "Boure" in C major, 3/4 time. The score consists of four systems of music. The first system starts with a treble clef and a common time signature 'C'. The notes are e, e, rxa, r, ax, r, a, rxa, a, a, a, a, bxa, r, b. The second system starts with a measure number '4' and contains notes ax, a, a, a, a, rxa, a, a, a, a, r, ax, a, a, a, a, a, a, a, a. The third system starts with a measure number '8' and contains notes e, e, rxa, a, fa, ex, f, h, fx, h, k. The fourth system starts with a measure number '11' and contains notes h, fx, h, fx, a, f, a, a, a. The score includes various musical notations such as stems, beams, and slurs, along with handwritten annotations like 'a', 'r', 'x', 'a', 'f', 'h', 'k' and rhythmic markings like '4' and '(1*)'.

1. Original : pas d'indication rythmique

Bouree

Musical notation for the first system of the Bouree. It consists of a single staff with a common time signature (C). The notes are: a, a, a, r, a, r, a, a, r, a. There are handwritten annotations below the staff: 'a' under the first note, 'a a r a' under the second measure, 'r r a a' under the third measure, and 'r a' under the fourth measure. A '4' is written below the third measure.

Musical notation for the second system of the Bouree, starting at measure 4. The notes are: r, x, a, r, a, r, a, a, r, a, r, a, a, r, a. There are handwritten annotations below the staff: 'a a r a' under the second measure, 'r r a a' under the third measure, and 'a a a a' under the fourth measure. A '4' is written below the first measure.

Musical notation for the third system of the Bouree, starting at measure 8. The notes are: r, r, a, e, r, a, r, a, e, a, r, a, r, r, a, r, a, r, a. There are handwritten annotations below the staff: 'a a' under the second measure, 'a a' under the third measure, and 'a a' under the fourth measure. A '4' is written below the first measure.

Musical notation for the fourth system of the Bouree, starting at measure 13. The notes are: r, r, a, e, r, f, ex., a, r, a, r, x, a, r, a, a. There are handwritten annotations below the staff: 'a a' under the second measure, 'a a' under the third measure, and 'a' under the fourth measure. A '4' is written below the first measure. A double bar line with repeat dots is at the end of the system. A small symbol resembling a treble clef is at the bottom center.

Buore

Handwritten musical score for 'Buore' in common time. The score consists of five systems of music, each with a vocal line and a bass line. The vocal line includes lyrics and dynamic markings (h, f, fx, f). The bass line includes rhythmic notation (a, r, b, x) and dynamic markings (f). The piece ends with a decorative flourish.

System 1: *h f* *h f h f h f* *h f x a r e r* *a* *a b r*

System 2: *r x a r* *a b* *a x* *b b b b b* *a b* *a b b b a*

System 3: *b x a r a r a* *f b f* *r a* *b b a b b*

System 4: *a a a a* *e b r x a e* *f f* *f f* *f e r e e*

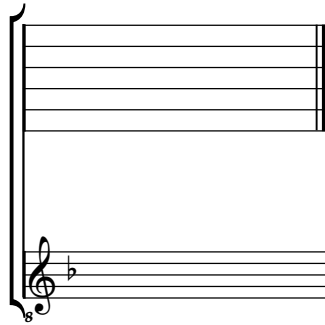
System 5: *(e) r x a* *r a b* *a r a r x r* *a* *a*

1. Original : pas d'indication rythmique

Tonalité : Fa majeur

Accord ordinaire des basses du luth

Scordature par octave



Accord des 11 chœurs du luth



