

*[Compositeur(s) anonyme(s)]*

# [4 pièces]

Courante W., Buore, Rondeus, Saraband:

Fa majeur

**Manuscrit de New York US-NYpMYO**

*The New York Music Library*

US-NYp ms. Music Reserve \*MYO

*Folios 91v. à 93v.*







# Rondeus

Musical notation for the first system of 'Rondeus'. It consists of a single staff in common time (C) with a treble clef. The melody is written in a simple, rhythmic style. Below the staff, there are handwritten annotations: 'a' under the first measure, 'a a a a' under the second, 'a' under the third, '4 a' under the fourth, and 'a a a' under the fifth.

Musical notation for the second system of 'Rondeus', starting at measure 4. It features a treble clef and a common time signature. The melody includes dynamic markings such as 'f' and 'f'. Below the staff, there are handwritten annotations: '4' under the first measure, 'a a' under the second, 'a a a a a' under the third, and 'a a a' under the fourth.

Musical notation for the third system of 'Rondeus', starting at measure 8. It includes the instruction 'Da Capo' above the staff. The notation shows a treble clef and a common time signature. Below the staff, there are handwritten annotations: '4' under the first measure, '4' under the second, 'a' under the third, 'a' under the fourth, and 'a a' under the fifth.

Musical notation for the fourth system of 'Rondeus', starting at measure 11. It includes the instruction 'Da Capo' above the staff. The notation shows a treble clef and a common time signature. Below the staff, there are handwritten annotations: 'a' under the first measure, 'a' under the second, and 'a' under the third. The system concludes with a decorative floral flourish.

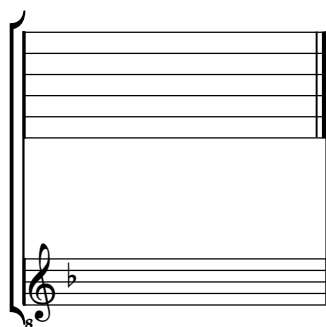
# Saraband:

Handwritten musical score for Saraband, featuring a single staff with a treble clef and a 3/4 time signature. The score consists of five systems of music, each with a line of notes above and a line of figured bass below. The notes are mostly quarter and eighth notes. The figured bass includes various symbols such as 'a', 'r', 'e', 'x', 'b', and '4', indicating fingerings and rhythmic patterns. The piece concludes with a double bar line and a decorative flourish.

# Tonalité : Fa majeur

*Accord ordinaire des basses du luth*

## *Scordature par octave*



## *Accord des 11 chœurs du luth*

Musical notation for the 11 chords of the lute. The notation is written on a six-line staff. The top line is labeled 'a' and contains a series of notes: a, a, a, a, a, a, a, a, a, a, a. The bottom line is labeled '4' and contains a series of notes: f, c, f, c, f, c, f, c, f, c, f. The notation is written in a stylized, handwritten style.