

*[Compositeur anonyme]*

# Buore W.

La majeur

**Manuscrit de New York US-NYpMYO**

*The New York Music Library*

US-NYp ms. Music Reserve \*MYO

*Folio 86r.*



# Buore W.

Musical notation for the first system (measures 1-4). The staff shows a treble clef, a common time signature (C), and a key signature of one sharp (F#). The melody consists of quarter and eighth notes. The lyrics are: *ip h i g h g g x r e r e e r x a*. The bass line consists of whole notes: *a a a a a a*. There are 4-measure rests in measures 3 and 4.

Musical notation for the second system (measures 5-8). The staff continues the melody with lyrics: *e r a r r a x b b x b p x p e r r e a a r*. The bass line continues with *a a a r a a*. There are 4-measure rests in measures 7 and 8.

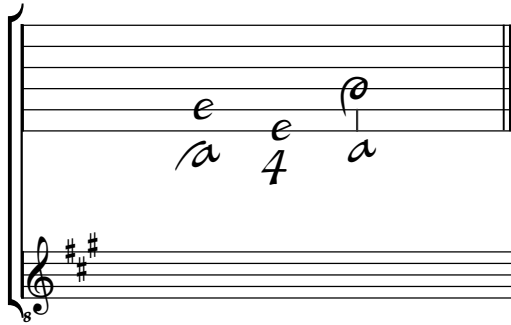
Musical notation for the third system (measures 9-12). The staff continues the melody with lyrics: *a b r a r b x r e a x e e e r x a r r a a e a*. The bass line continues with *a a a a a a*. There are 4-measure rests in measures 10 and 11.

Musical notation for the fourth system (measures 13-16). The staff continues the melody with lyrics: *a e r e r x a p x a r r x a p a e a*. The bass line continues with *a a a a a a*. The system ends with a double bar line and a decorative flourish.

# Tonalité : La majeur

Accord des basses du luth : 3 dièses

## Scordature par octave



## Accord des 11 chœurs du luth



