

[Compositeur anonyme]

[2 pièces]

Sarabande, Aria di Pianto

La mineur

Manuscrit de New York US-NYpMYO

The New York Music Library

US-NYp ms. Music Reserve *MYO

Folios 61v. & 62r.



Sarabande

Musical notation system 1 (measures 1-3):

Measure 1: Treble clef, 3/4 time signature. Notes: *f* (quarter), *a* (quarter), *r* (quarter), *e* (quarter). Bass clef: *a* (quarter).

Measure 2: Treble clef. Notes: *r*^x (quarter), *r* (quarter), *e* (quarter). Bass clef: *r* (quarter), *e* (quarter).

Measure 3: Treble clef. Notes: *r*^x (quarter), *a* (quarter), *r* (quarter), *e* (quarter), *a*^x (quarter), *r* (quarter). Bass clef: *a* (quarter), *a* (quarter) with a circled asterisk (1*).

Musical notation system 2 (measures 4-6):

Measure 4: Treble clef. Notes: *a*^x (quarter), *a* (quarter), *e* (quarter), *a* (quarter). Bass clef: *a* (quarter), *a* (quarter) with a circled 4.

Measure 5: Treble clef. Notes: *r* (quarter), *a* (quarter), *r* (quarter), *a* (quarter), *a* (quarter). Bass clef: *e* (quarter), *a* (quarter).

Measure 6: Treble clef. Notes: *e* (quarter), *r* (quarter), *e* (quarter), *a* (quarter), *r* (quarter). Bass clef: *a* (quarter), *a* (quarter) with a circled *a*.

Musical notation system 3 (measures 7-8):

Measure 7: Treble clef. Notes: *a*^x (quarter), *e* (quarter), *r* (quarter), *a*^x (quarter), *e* (quarter). Bass clef: *a* (quarter), *a* (quarter) with a circled *a*.

Measure 8: Treble clef. Notes: *r*^x (quarter), *a* (quarter), *a* (quarter), *e* (quarter). Bass clef: *a* (quarter), *a* (quarter) with a circled asterisk (2*).

The system concludes with a double bar line and a decorative floral ornament.

1. Original : indication rythmique de noire pointée
 2. Original : indication rythmique de noire pointée

Aria di Pianto

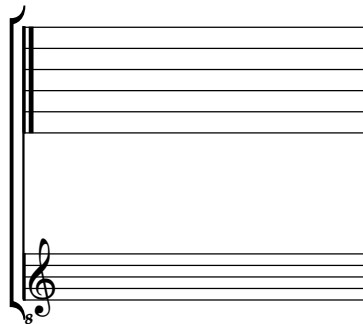
Handwritten musical score for "Aria di Pianto". The score is written in C major and 3/4 time. It consists of four systems of music. The first system begins with a common time signature 'C'. The notation includes vocal lines with lyrics 'a a a', 'a r r a', and 'e a x r r'. The second system starts with a measure rest '4' and includes lyrics 'a r x a', 'r r a', 'a r r a', and 'a r a'. The third system starts with a measure rest '7' and includes lyrics 'a r a', 'a r x a', 'r e a r', and 'g h g h k h k'. The fourth system starts with a measure rest '11' and includes lyrics 'h k h', 'k r e', 'r r x e', and 'e r'. The score features various musical notations such as notes, rests, and ornaments, along with performance markings like 'a', 'x', and 'r'.

1. Original : pas d'indication rythmique

Tonalité : La mineur

Accord ordinaire du luth

Scordature par octave



Accord des 11 chœurs du luth

