

[Compositeur(s) anonyme(s)]

[3 pièces]

Echo di #, Menue four le, Bouree

La mineur

Manuscrit de New York US-NYpMYO

The New York Music Library

US-NYp ms. Music Reserve *MYO

Folios 51v. à 54v.



Echo di

4

8

12

16

20

24

1. Original : indication rythmique de double-croche

28

ex f e f :||: g e e f e f e r b x :||: g e x f e b x r b

a a f g h a r a r a a r

32

r f f :||: r r a r a r a r :||: a a a a 4 r a a a b

a a a a a a 4 r a a a b

36

a a r a :||: f x a a a a :||: r a r a r

a a a a a a 4 a a a a a

40

f x a a a a :||: f a a a a a e :||: e g h

a 4 a a a a a a e g a

43

g h g e g e r e r e r a r a r :||: f a r a r a a

a a a a a a 4 a a a a

46

a r a x a r :||: f a a r x a r a a a :||: r e a e

a 4 a 4 a a a a

Menue four le

Handwritten musical notation for the first system. It consists of a single staff with a treble clef. The first measure is marked with a '3' and contains notes *h g h g / h*. The second measure contains notes *a r a r a*. The third measure contains notes *a_x r a r a*. The fourth measure contains notes *r a r a* and is marked with a '4'. Above the staff, there are four notes with stems: *h*, *a*, *a*, and *a*.

Handwritten musical notation for the second system, starting at measure 5. It consists of a single staff with a treble clef. The first measure is marked with a '3' and contains notes *h g h g / h*. The second measure contains notes *a r a r a*. The third measure contains notes *a_x r a r*. The fourth measure contains notes *r a* and is marked with a '4'. Above the staff, there are four notes with stems: *h*, *a*, *a*, and *a*.

Handwritten musical notation for the third system, starting at measure 9. It consists of a single staff with a treble clef. The first measure contains notes *r a r a r e* and is marked with a '4'. The second measure contains notes *a_x r a* and is marked with a '4'. The third measure contains notes *a_x r a r a*. The fourth measure contains notes *a_x r a r* and is marked with a '4'. Above the staff, there are four notes with stems: *a*, *a*, *a*, and *a*.

Handwritten musical notation for the fourth system, starting at measure 13. It consists of a single staff with a treble clef. The first measure contains notes *r a r a r e* and is marked with a '4'. The second measure contains notes *a_x r a* and is marked with a '4'. The third measure contains notes *a r a_x a*. The fourth measure contains notes *a e* and is marked with a '4'. Above the staff, there are four notes with stems: *a*, *a*, *a*, and *a*.

Bouree

1

2

3

4

6

7

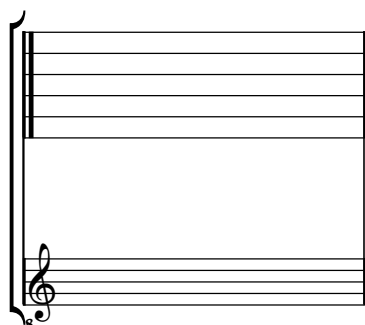
10

11

Tonalité : La mineur

Accord ordinaire du luth

Scordature par octave



Accord des 11 chœurs du luth

