

M. Ant[oni Eckstein ?]

Bouree M. Ant:

La mineur

Manuscrit de New York US-NYpMYO

The New York Music Library

US-NYp ms. Music Reserve *MYO

Folio 38r.



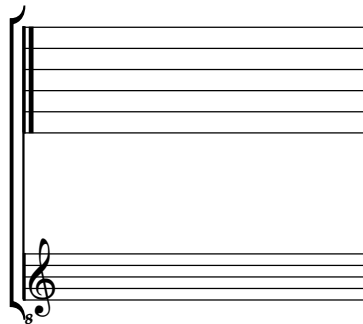
Bouree M. Ant:

Handwritten musical score for 'Bouree M. Ant:'. The score is written on a grand staff with a treble clef and a common time signature (C). It consists of five systems of music, each with a numbered measure indicator (1, 4, 8, 12, 15) and a corresponding rhythm line above the staff. The notes and rests are decorated with handwritten symbols and ligatures. The first system (measures 1-4) begins with a common time signature and a series of rhythmic markings (r, r) above the staff. The second system (measures 5-8) starts with a measure marked '4' and includes notes like 'e', 'r', 'e', 'h', 'g', 'x', 'h'. The third system (measures 9-12) starts with a measure marked '8' and includes notes like 'e', 'e', 'a', 'x', 'r', 'e', 'a', 'g', 'h', 'f', 'h', 'g'. The fourth system (measures 13-15) starts with a measure marked '12' and includes notes like 'h', 'h', 'k', 'h', 'k', 'h', 'e', 'h', 'g', 'x', 'h', 'g', 'x', 'h', 'e'. The fifth system (measures 16-18) starts with a measure marked '15' and includes notes like 'e', 'e', 'e'. The score concludes with a double bar line followed by a decorative flourish consisting of a cluster of small floral or star-like motifs.

Tonalité : La mineur

Accord ordinaire du luth

Scordature par octave



Accord des 11 chœurs du luth

