

M. A[ntoni Eckstein ?]

Courante M. A:

La mineur

Manuscrit de New York US-NYpMYO

The New York Music Library

US-NYp ms. Music Reserve *MYO

Folios 36v. & 37r.

*Voir dans le manuscrit de Grüssau/Krzeszów PL-Wu2010, p. 77, Courante
« W.B. 2do » (PLWU2010_86)*



Courante. M. A:

Handwritten musical score for Courante in G minor, M. A. The score is written on a five-line staff with a 3/4 time signature. The notation includes notes, rests, and various ornaments (accents, mordents, and grace notes). The piece is divided into measures, with measure numbers 5, 10, 15, 21, and 27 indicated on the left. The score concludes with a decorative flourish.

Measure 1: *e e era r*

Measure 2: *r a r r a*

Measure 3: *a e a*

Measure 4: *r r e a*

Measure 5: *a a*

Measure 6: *r a*

Measure 7: *a x a*

Measure 8: *r r e*

Measure 9: *r a r x e*

Measure 10: *r r a*

Measure 11: *r a*

Measure 12: *r a r a*

Measure 13: *r r*

Measure 14: *r r a*

Measure 15: *r r a*

Measure 16: *r r a*

Measure 17: *r r a*

Measure 18: *r r a*

Measure 19: *r r a*

Measure 20: *r r a*

Measure 21: *r r a*

Measure 22: *r r a*

Measure 23: *r r a*

Measure 24: *r r a*

Measure 25: *r r a*

Measure 26: *r r a*

Measure 27: *r r a*

Measure 28: *r r a*

Measure 29: *r r a*

Measure 30: *r r a*

Measure 31: *r r a*

Measure 32: *r r a*

Measure 33: *r r a*

Measure 34: *r r a*

Measure 35: *r r a*

Measure 36: *r r a*

Measure 37: *r r a*

Measure 38: *r r a*

Measure 39: *r r a*

Measure 40: *r r a*

Measure 41: *r r a*

Measure 42: *r r a*

Measure 43: *r r a*

Measure 44: *r r a*

Measure 45: *r r a*

Measure 46: *r r a*

Measure 47: *r r a*

Measure 48: *r r a*

Measure 49: *r r a*

Measure 50: *r r a*

Measure 51: *r r a*

Measure 52: *r r a*

Measure 53: *r r a*

Measure 54: *r r a*

Measure 55: *r r a*

Measure 56: *r r a*

Measure 57: *r r a*

Measure 58: *r r a*

Measure 59: *r r a*

Measure 60: *r r a*

Measure 61: *r r a*

Measure 62: *r r a*

Measure 63: *r r a*

Measure 64: *r r a*

Measure 65: *r r a*

Measure 66: *r r a*

Measure 67: *r r a*

Measure 68: *r r a*

Measure 69: *r r a*

Measure 70: *r r a*

Measure 71: *r r a*

Measure 72: *r r a*

Measure 73: *r r a*

Measure 74: *r r a*

Measure 75: *r r a*

Measure 76: *r r a*

Measure 77: *r r a*

Measure 78: *r r a*

Measure 79: *r r a*

Measure 80: *r r a*

Measure 81: *r r a*

Measure 82: *r r a*

Measure 83: *r r a*

Measure 84: *r r a*

Measure 85: *r r a*

Measure 86: *r r a*

Measure 87: *r r a*

Measure 88: *r r a*

Measure 89: *r r a*

Measure 90: *r r a*

Measure 91: *r r a*

Measure 92: *r r a*

Measure 93: *r r a*

Measure 94: *r r a*

Measure 95: *r r a*

Measure 96: *r r a*

Measure 97: *r r a*

Measure 98: *r r a*

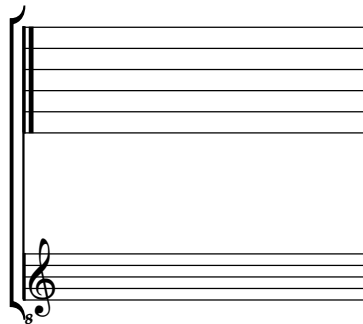
Measure 99: *r r a*

Measure 100: *r r a*

Tonalité : La mineur

Accord ordinaire du luth

Scordature par octave



Accord des 11 chœurs du luth

