

*Joseph Porsile ?*  
(1672 - 1750)

# Gigue M. Por.

Ré mineur

**Manuscrit de New York US-NYpMYO**

*The New York Music Library*

US-NYp ms. Music Reserve \*MYO

*Folio 16v & 17r*



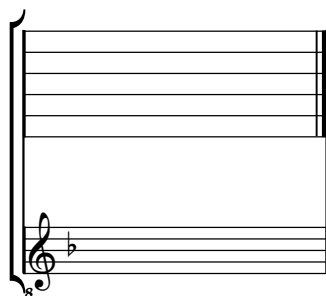
# Gigue M. Por.

Handwritten musical score for Gigue M. Por. in Ré mineur. The score is written on a grand staff (treble and bass clefs) and includes a 3/4 time signature. The music is divided into measures, with measure numbers 7, 14, 21, 28, 35, and 42 indicated on the left. The notation includes various rhythmic values (quarter, eighth, and sixteenth notes), rests, and dynamic markings such as *mf* and *f*. There are also some handwritten annotations like *arco* and *tr*. The piece concludes with a decorative flourish at the end of the final measure.

# Tonalité : Ré mineur

*Accord ordinaire des basses du luth*

*Scordature par octave*



*Accord des 11 chœurs du luth*



