

[Compositeur anonyme]

Aria

Ré mineur

Manuscrit de New York US-NYpMYO

The New York Music Library

US-NYp ms. Music Reserve *MYO

Folios 15v. & 16r.



Aria

Musical score for an Aria, consisting of six systems of music. The score includes a vocal line and a piano accompaniment. The key signature is one flat (B-flat), and the time signature is common time (C). The score is marked with various dynamics and articulations.

System 1: Measures 1-3. The vocal line begins with a quarter note G4, followed by quarter notes A4 and B4. The piano accompaniment features a series of sixteenth notes in the right hand and a bass line in the left hand.

System 2: Measures 4-6. The vocal line continues with quarter notes C5, B4, and A4. The piano accompaniment maintains its rhythmic pattern.

System 3: Measures 7-9. The vocal line includes quarter notes G4, F4, and E4. The piano accompaniment features a repeat sign at the end of the system.

System 4: Measures 10-12. The vocal line includes quarter notes D4, C4, and B3. The piano accompaniment features a change in time signature to 4/4 at measure 11.

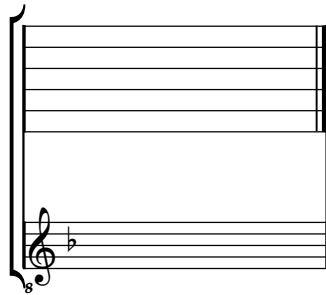
System 5: Measures 13-15. The vocal line includes quarter notes A3, G3, and F3. The piano accompaniment features a key signature change to two flats (B-flat and E-flat) at measure 14.

System 6: Measures 16-17. The vocal line includes quarter notes E3 and D3. The piano accompaniment concludes with a decorative flourish.

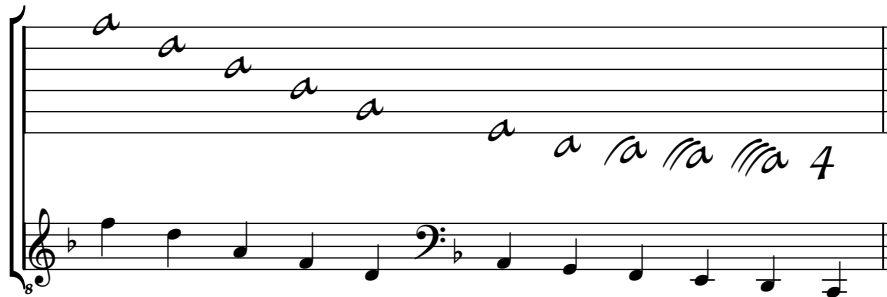
Tonalité : Ré mineur

Accord ordinaire des basses du luth

Scordature par octave



Accord des 11 chœurs du luth

Musical notation for the 11-voice chord. It consists of two staves. The upper staff is a six-line guitar staff with a treble clef and a flat sign on the first line. It contains a series of notes on the strings, with the letter 'a' written above each note. The notes are on the first, second, third, fourth, fifth, and sixth strings. The lower staff is a five-line bass staff with a bass clef and a flat sign on the first line. It contains a series of notes on the strings, with the letter 'a' written above each note. The notes are on the first, second, third, fourth, fifth, and sixth strings. The notation is in D minor.

