

[Compositeur anonyme]
Johann Antonin Losy von Losinthal
(1650 - 22 août 1721)

[Partie]

Præludium, Allamande, Aria,
Gavotte C.L., Gigue C.L., Menuet C. L.

Ré mineur

Manuscrit de New York US-NYpMYO
The New York Music Library
US-NYp ms. Music Reserve *MYO
Folios 12r. à 15r.

*Voir le manuscrit de de luth de Kremsmünster A-KR77, folios 7v et 8r,
Menuet C. L. (AKR77_4)*



[Partie]

Præludium

The image shows a handwritten musical score for a piece titled "Præludium". The notation is written on a five-line staff. At the top left, there is a treble clef, a key signature of one flat (B-flat), and a 3/4 time signature. The music begins with a fermata over a whole note. The first line contains several measures of music, including notes like 'a', 'e', and 'f', and rests. The second line shows a rhythmic pattern of eighth notes, with notes like 'a', 'r', and 'a'. The piece concludes with a double bar line and a final note 'a'.

Allamande

Handwritten musical score for 'Allamande'. The score is written on six systems, each with two staves. The notation includes rhythmic values (quarter, eighth, sixteenth notes), accidentals (sharps, naturals), and dynamic markings (f, ff, sfz). The piece concludes with a decorative flourish.

1. Original : pas d'indication rythmique

Aria

1. Original : pas d'indication rythmique

3. Original : aucune autre indication rythmique jusqu'à la fin de la mesure

5. Original : pas d'indication rythmique

8. Original : pas d'indication rythmique

11. Original : pas d'indication rythmique

1. Original : pas d'indication rythmique
 2. Original : pas d'indication rythmique
 3. Original : aucune autre indication rythmique jusqu'à la fin de la mesure

Gavotte C.L.

(1*)

3

5

7

1. Original : pas d'indication rythmique et pas de barre de mesure ensuite.

Gigue C.L.

3

Handwritten musical notation for measures 1-5. Treble clef, 3/4 time signature. Notes: a, r, a, f, e, a, k, i, h, k, a. Bass line: a, a, a, a, a.

6

Handwritten musical notation for measures 6-10. Treble clef, 3/4 time signature. Notes: a, rx, a, rx, a, e, f, a, rx, a, a, r, a, r, e. Bass line: a, a, a, a, a, a, a, a.

12

Handwritten musical notation for measures 11-15. Treble clef, 3/4 time signature. Notes: rx, h, h, f, a, r, rx, a, rx, a, e. Bass line: a, a, a, a, a, a.

18

Handwritten musical notation for measures 16-20. Treble clef, 3/4 time signature. Notes: a, r, e, r, e, f, h, hx, k. Bass line: a, a, a, a, a, a.

24

Handwritten musical notation for measures 21-25. Treble clef, 3/4 time signature. Notes: i, h, k, a, rx, a, rx, a, e, f, a. Bass line: a, a, a, a, a. Ends with a decorative flourish.

Menuet C. L.

3

a k i x | k a r | a r a r a | a e a r a

5

a k i x | k a r | a r a r a | a a a

9

e f e r f a | a x r a | r e r a r a | e x r a

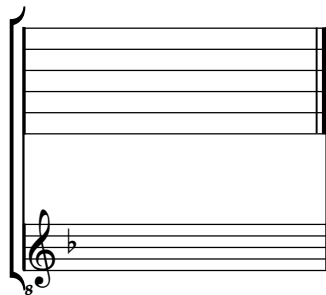
13

e f e r f a | a x r a | r x a r x a e | a a a

Tonalité : Ré mineur

Accord ordinaire des basses du luth

Scordature par octave



Accord des 11 chœurs du luth

