

David Kellner

(1670 - 6 avril 1748)

Campanella del Sig.^{re} Weiss

Ré majeur

Manuscrit de Munich D-Mbs5362

Munich, Bayerische Staatsbibliothek

D-Mbs ms. Mus. 5362

Folio 56v

*Voir dans le manuscrit de Grüssau PL–WRu2002, page 15 : Campanella
(WRu6)*

*Cette Campanella figure dans le recueil manuscrit édité par l'auteur :
"David Kellners XVI auserlesene Lauten-Stücke", pages N. 40 et N. 41
(DK12)*



Campanella del Sig.^{re} Weiss

Handwritten musical score for "Campanella del Sig.^{re} Weiss". The score is written on a grand staff (treble and bass clefs) in common time (C). The piece consists of 12 measures, with some measures containing multiple systems of notation. The notation includes notes (e, a, r, e, a, e, e, a, e, e) and rests, with some notes beamed together. There are several dynamic markings (p, m) and articulation marks (trills, slurs). The score ends with a repeat sign and a double bar line.

Measure 1: Treble clef, common time. Notes: e, e, e, e, r, e, a, e, e, a, e, e. Bass clef: a. Dynamic: p. Articulation: trill on the first 'e'.

Measure 2: Treble clef: e, e, e, e, e, e, e, e, e, e, e, e. Bass clef: a, a, a, a, a, a, a, a, a, a, a, a. Dynamic: m. Articulation: trill on the first 'e'.

Measure 3: Treble clef: e, a, e, a, e, a, e, e, a, e, e. Bass clef: e, r, r, r, r, e, a, r, a, e, r, a. Dynamic: m. Articulation: trill on the first 'e'.

Measure 4: Treble clef: a, e, a, r, a, a, a, a, a, a, a. Bass clef: e, r, a, e, r, a, e, e, e, e, e. Dynamic: m. Articulation: trill on the first 'a'.

Measure 5: Treble clef: e, r, e, e, e, r, e, e, a, e, e. Bass clef: e, e, r, e, a, e, e, e, e, e, e. Dynamic: m. Articulation: trill on the first 'e'.

Measure 6: Treble clef: a, a, a, a, e, a, r, r, r, r, r, r. Bass clef: e, a, r, e, r, e, r, a, e, r, a, e, r, a. Dynamic: m. Articulation: trill on the first 'a'.

Measure 7: Treble clef: a, r, e, a, e, a, r, e, a, r, r. Bass clef: e, r, r, e, r, a, e, r, a, e, r, a. Dynamic: m. Articulation: trill on the first 'a'.

Measure 8: Treble clef: e, r, e, r, e, r, e, a, a, a, a, a. Bass clef: e, e, e, e, e, e, e, e, e, e, e, e. Dynamic: m. Articulation: trill on the first 'e'.

Measure 9: Treble clef: e, r, e, r, e, r, e, a, a, a, a, a. Bass clef: e, e, e, e, e, e, e, e, e, e, e, e. Dynamic: m. Articulation: trill on the first 'e'.

Measure 10: Treble clef: e, r, e, r, e, r, e, a, a, a, a, a. Bass clef: e, e, e, e, e, e, e, e, e, e, e, e. Dynamic: m. Articulation: trill on the first 'e'.

Measure 11: Treble clef: e, r, e, r, e, r, e, a, a, a, a, a. Bass clef: e, e, e, e, e, e, e, e, e, e, e, e. Dynamic: m. Articulation: trill on the first 'e'.

Measure 12: Treble clef: e, r, e, r, e, r, e, a, a, a, a, a. Bass clef: e, e, e, e, e, e, e, e, e, e, e, e. Dynamic: m. Articulation: trill on the first 'e'.

15

(1*)

17

(2*)

19

21

23

25

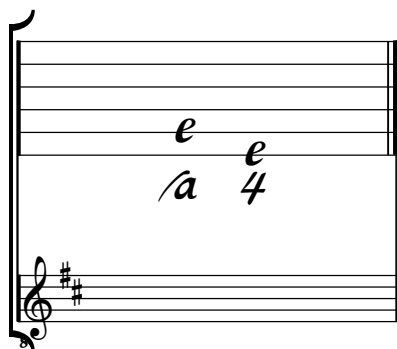
27

1. Original : Fa (a sur la chanterelle)
 2. id.

Tonalité : Ré majeur

Accord des basses du luth : 2 dièses

Scordature par octave



Accord des 11 chœurs du luth

