

*[Compositeur anonyme]*

# [2 menuets]

Menuet, Menuet

Do majeur

Manuscrit de Munich D-Mbs5362

*Munich, Bayerische Staatsbibliothek*

D-Mbs ms. Mus. 5362

*Folio 50r*



# Menuet

The image shows a musical score for a Minuet in G major, consisting of 24 measures. The score is written on a grand staff with two staves per system. The key signature is one sharp (F#), and the time signature is 3/4. The notation includes various rhythmic values, accidentals, and dynamic markings such as *f* and *a*. The piece concludes with a double bar line and repeat dots.

Measures 1-4: The first system contains measures 1 through 4. Measure 1 features a treble clef, a 3/4 time signature, and a triplet of eighth notes (G, A, B) with a forte (*f*) dynamic. Measure 2 continues with eighth notes (C, D, E, F, G). Measure 3 has quarter notes (G, A, B) with a forte (*f*) dynamic. Measure 4 has quarter notes (C, D, E, F, G) with a forte (*f*) dynamic.

Measures 5-8: The second system contains measures 5 through 8. Measure 5 has quarter notes (G, A, B) with a forte (*f*) dynamic. Measure 6 has quarter notes (C, D, E, F, G) with a forte (*f*) dynamic. Measure 7 has quarter notes (G, A, B) with a forte (*f*) dynamic. Measure 8 has quarter notes (C, D, E, F, G) with a forte (*f*) dynamic.

Measures 9-13: The third system contains measures 9 through 13. Measure 9 has quarter notes (G, A, B) with a forte (*f*) dynamic. Measure 10 has quarter notes (C, D, E, F, G) with a forte (*f*) dynamic. Measure 11 has quarter notes (G, A, B) with a forte (*f*) dynamic. Measure 12 has quarter notes (C, D, E, F, G) with a forte (*f*) dynamic. Measure 13 has quarter notes (G, A, B) with a forte (*f*) dynamic.

Measures 14-18: The fourth system contains measures 14 through 18. Measure 14 has quarter notes (C, D, E, F, G) with a forte (*f*) dynamic. Measure 15 has quarter notes (G, A, B) with a forte (*f*) dynamic. Measure 16 has quarter notes (C, D, E, F, G) with a forte (*f*) dynamic. Measure 17 has quarter notes (G, A, B) with a forte (*f*) dynamic. Measure 18 has quarter notes (C, D, E, F, G) with a forte (*f*) dynamic.

Measures 19-22: The fifth system contains measures 19 through 22. Measure 19 has quarter notes (G, A, B) with a forte (*f*) dynamic. Measure 20 has quarter notes (C, D, E, F, G) with a forte (*f*) dynamic. Measure 21 has quarter notes (G, A, B) with a forte (*f*) dynamic. Measure 22 has quarter notes (C, D, E, F, G) with a forte (*f*) dynamic.

Measures 23-24: The sixth system contains measures 23 and 24. Measure 23 has quarter notes (G, A, B) with a forte (*f*) dynamic. Measure 24 has quarter notes (C, D, E, F, G) with a forte (*f*) dynamic.

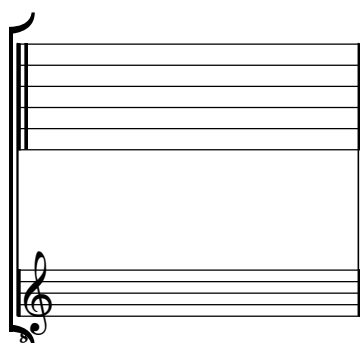
# Menuet

Musical score for a Minuet in G major, measures 1-24. The score is written for a single melodic line on a five-line staff. The key signature is one sharp (F#), and the time signature is 3/4. The piece consists of 24 measures, divided into six systems of four measures each. The notation includes various rhythmic values (quarter, eighth, and sixteenth notes), rests, and articulation marks such as slurs and accents. The first measure (measure 1) begins with a treble clef, a 3/4 time signature, and a key signature of one sharp. The notes in the first measure are G4, A4, B4, A4, G4, F#4, and A4. The second measure contains G4, A4, B4, A4, and G4. The third measure contains G4, A4, B4, and A4. The fourth measure contains G4, A4, B4, and A4. The fifth measure (measure 5) begins with a treble clef and a 3/4 time signature. The notes in the fifth measure are G4, A4, B4, A4, G4, F#4, and A4. The sixth measure contains G4, A4, B4, A4, and G4. The seventh measure contains G4, A4, B4, and A4. The eighth measure contains G4, A4, B4, and A4. The ninth measure (measure 9) begins with a treble clef and a 3/4 time signature. The notes in the ninth measure are G4, A4, B4, A4, G4, F#4, and A4. The tenth measure contains G4, A4, B4, A4, and G4. The eleventh measure contains G4, A4, B4, and A4. The twelfth measure contains G4, A4, B4, and A4. The thirteenth measure (measure 13) begins with a treble clef and a 3/4 time signature. The notes in the thirteenth measure are G4, A4, B4, A4, G4, F#4, and A4. The fourteenth measure contains G4, A4, B4, A4, and G4. The fifteenth measure contains G4, A4, B4, and A4. The sixteenth measure contains G4, A4, B4, and A4. The seventeenth measure (measure 17) begins with a treble clef and a 3/4 time signature. The notes in the seventeenth measure are G4, A4, B4, A4, G4, F#4, and A4. The eighteenth measure contains G4, A4, B4, A4, and G4. The nineteenth measure contains G4, A4, B4, and A4. The twentieth measure contains G4, A4, B4, and A4. The twenty-first measure (measure 21) begins with a treble clef and a 3/4 time signature. The notes in the twenty-first measure are G4, A4, B4, A4, G4, F#4, and A4. The twenty-second measure contains G4, A4, B4, A4, and G4. The twenty-third measure contains G4, A4, B4, and A4. The twenty-fourth measure contains G4, A4, B4, and A4. The score concludes with a double bar line and repeat dots.

# Tonalité : Do majeur

*Accord ordinaire du luth*

*Scordature par octave*



*Accord des 12 chœurs du luth*

