

*Johann Adolf Hasse*

(1699 - 1783)

# Aria

« Digli ché io son fedele »  
del Sig.<sup>re</sup> Hass.

Fa majeur

Manuscrit de Munich D-Mbs5362

*Munich, Bayerische Staatsbibliothek*

D-Mbs ms. Mus. 5362

*Folios 44v à 46r*



# Aria « Digli ché io son fedele. » del Sig.<sup>re</sup> Hass

*p* *mp* *mp*
*mp* *mp* *mp*

Adagio.

3 *mp* *mp* *mp* *p* *mp* *mp* *p*

5 *mp* *mp* *mp* *mp* *mp* *mp* *mp* *mp* *mp* *mp*

7 *mp* *mp* *mp* *mp* *mp* *mp* *mp* *mp* *p* *mp* *mp* *p* *m*<sub>3</sub> *m*<sub>3</sub> *p*

9 *m*<sub>3</sub> *m*<sub>3</sub> *p* *m*<sub>3</sub> *m*<sub>3</sub> *p* *p* *p* *p* *mp* *mp* *mp*

11 *p* *p* *mp* *mp* *p* *p* *mp* *mp*

13 *p* *mp* *mp* *mp* *mp* *mp* *mp* *mp* *mp* *mp* *mp*

piano.

15

Handwritten musical notation for measures 15-16. The top staff contains a vocal line with notes and slurs. The bottom staff contains a piano accompaniment with chords and fingerings.

17

Handwritten musical notation for measures 17-18. The top staff contains a vocal line with notes and slurs. The bottom staff contains a piano accompaniment with chords and fingerings.

19

Handwritten musical notation for measures 19-20. The top staff contains a vocal line with notes and slurs. The bottom staff contains a piano accompaniment with chords and fingerings.

21

Handwritten musical notation for measures 21-22. The top staff contains a vocal line with notes and slurs. The bottom staff contains a piano accompaniment with chords and fingerings.

23

Handwritten musical notation for measures 23-24. The top staff contains a vocal line with notes and slurs. The bottom staff contains a piano accompaniment with chords and fingerings.

25

Handwritten musical notation for measures 25-26. The top staff contains a vocal line with notes and slurs. The bottom staff contains a piano accompaniment with chords and fingerings.

pian.

27

Handwritten musical notation for measures 27-28. The top staff contains a vocal line with notes and slurs. The bottom staff contains a piano accompaniment with chords and fingerings.

.../...



49

54

59

64

69

74

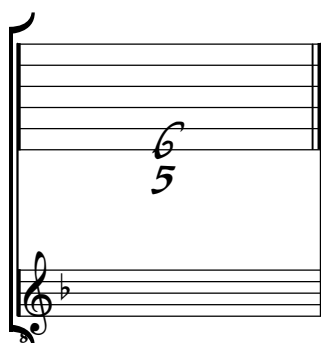
75

Da Capo del Segno ♯

Tonalité : Fa majeur

Accord du luth : 1 bémol

*Scordature par octave*



*Accord des 13 chœurs du luth*

