

Johann Kropffgans

(1708 - 1770)

2 Menuets del Sig^{re}. Kropffgans

Menuet del Sig^{re} Kropffgans, Menuet du même

Sol majeur

Manuscrit de Munich D-Mbs5362

Munich, Bayerische Staatsbibliothek

D-Mbs ms. Mus. 5362

Folio 30v



Menuet del Sig^{re} Kropffgans

Handwritten musical score for "Menuet del Sig^{re} Kropffgans". The score is written on two staves per system. The notation includes various rhythmic values (quarter, eighth, sixteenth notes), rests, and ornaments. Fingerings are indicated by numbers 1-5. The piece concludes with a decorative flourish.

System 1 (Measures 1-4):
 Measure 1: $\frac{3}{4}$ time signature. Notes: $\overset{\text{r}}{\underset{\text{a}}{\text{r}}}$ $\overset{\text{b}}{\text{b}}$ $\overset{\text{r}}{\text{r}}$.
 Measure 2: Notes: $\overset{\text{r}}{\text{r}}$ $\overset{\text{a}}{\text{a}}$ $\overset{\text{a}}{\text{a}}$.
 Measure 3: Notes: $\overset{\text{r}}{\text{r}}$ $\overset{\text{g}}{\text{g}}$ $\overset{\text{e}}{\text{e}}$ $\overset{\text{f}}{\text{f}}$.
 Measure 4: Notes: $\overset{\text{f}}{\text{f}}$ $\overset{\text{e}}{\text{e}}$ $\overset{\text{r}}{\text{r}}$.
 Bass line: $\overset{\text{a}}{\text{a}}$ $\overset{\text{a}}{\text{a}}$ $\overset{\text{a}}{\text{a}}$ $\overset{\text{a}}{\text{a}}$.

System 2 (Measures 5-8):
 Measure 5: Notes: $\overset{\text{a}}{\text{a}}$ $\overset{\text{r}}{\text{r}}$ $\overset{\text{b}}{\text{b}}$ $\overset{\text{r}}{\text{r}}$ $\overset{\text{a}}{\text{a}}$.
 Measure 6: Notes: $\overset{\text{a}}{\text{a}}$ $\overset{\text{e}}{\text{e}}$ $\overset{\text{r}}{\text{r}}$ $\overset{\text{e}}{\text{e}}$ $\overset{\text{a}}{\text{a}}$.
 Measure 7: Notes: $\overset{\text{a}}{\text{a}}$ $\overset{\text{g}}{\text{g}}$ $\overset{\text{e}}{\text{e}}$ $\overset{\text{h}}{\text{h}}$ $\overset{\text{g}}{\text{g}}$.
 Measure 8: Notes: $\overset{\text{e}}{\text{e}}$ $\overset{\text{a}}{\text{a}}$.
 Bass line: $\overset{\text{a}}{\text{a}}$ $\overset{\text{a}}{\text{a}}$ $\overset{\text{a}}{\text{a}}$ $\overset{\text{a}}{\text{a}}$.

System 3 (Measures 9-12):
 Measure 9: Notes: $\overset{\text{a}}{\text{a}}$ $\overset{\text{e}}{\text{e}}$ $\overset{\text{r}}{\text{r}}$ $\overset{\text{e}}{\text{e}}$ $\overset{\text{e}}{\text{e}}$.
 Measure 10: Notes: $\overset{\text{e}}{\text{e}}$ $\overset{\text{r}}{\text{r}}$ $\overset{\text{e}}{\text{e}}$ $\overset{\text{r}}{\text{r}}$.
 Measure 11: Notes: $\overset{\text{a}}{\text{a}}$ $\overset{\text{r}}{\text{r}}$ $\overset{\text{a}}{\text{a}}$ $\overset{\text{a}}{\text{a}}$ $\overset{\text{a}}{\text{a}}$.
 Measure 12: Notes: $\overset{\text{a}}{\text{a}}$ $\overset{\text{e}}{\text{e}}$ $\overset{\text{r}}{\text{r}}$.
 Bass line: $\overset{\text{a}}{\text{a}}$ $\overset{\text{a}}{\text{a}}$ $\overset{\text{a}}{\text{a}}$ $\overset{\text{a}}{\text{a}}$.

System 4 (Measures 13-16):
 Measure 13: Notes: $\overset{\text{a}}{\text{a}}$ $\overset{\text{a}}{\text{a}}$ $\overset{\text{a}}{\text{a}}$ $\overset{\text{r}}{\text{r}}$.
 Measure 14: Notes: $\overset{\text{r}}{\text{r}}$ $\overset{\text{r}}{\text{r}}$ $\overset{\text{b}}{\text{b}}$.
 Measure 15: Notes: $\overset{\text{h}}{\text{h}}$ $\overset{\text{h}}{\text{h}}$ $\overset{\text{g}}{\text{g}}$ $\overset{\text{h}}{\text{h}}$ $\overset{\text{f}}{\text{f}}$.
 Measure 16: Notes: $\overset{\text{e}}{\text{e}}$ $\overset{\text{h}}{\text{h}}$.
 Bass line: $\overset{\text{a}}{\text{a}}$ $\overset{\text{a}}{\text{a}}$ $\overset{\text{a}}{\text{a}}$ $\overset{\text{a}}{\text{a}}$.

System 5 (Measures 17-20):
 Measure 17: Notes: $\overset{\text{a}}{\text{a}}$ $\overset{\text{f}}{\text{f}}$ $\overset{\text{e}}{\text{e}}$ $\overset{\text{f}}{\text{f}}$ $\overset{\text{a}}{\text{a}}$.
 Measure 18: Notes: $\overset{\text{h}}{\text{h}}$ $\overset{\text{h}}{\text{h}}$ $\overset{\text{f}}{\text{f}}$ $\overset{\text{h}}{\text{h}}$ $\overset{\text{h}}{\text{h}}$.
 Measure 19: Notes: $\overset{\text{e}}{\text{e}}$ $\overset{\text{g}}{\text{g}}$ $\overset{\text{e}}{\text{e}}$ $\overset{\text{g}}{\text{g}}$ $\overset{\text{e}}{\text{e}}$.
 Measure 20: Notes: $\overset{\text{f}}{\text{f}}$ $\overset{\text{h}}{\text{h}}$ $\overset{\text{g}}{\text{g}}$ $\overset{\text{h}}{\text{h}}$ $\overset{\text{f}}{\text{f}}$.
 Bass line: $\overset{\text{a}}{\text{a}}$ $\overset{\text{a}}{\text{a}}$ $\overset{\text{a}}{\text{a}}$ $\overset{\text{a}}{\text{a}}$.

System 6 (Measures 21-24):
 Measure 21: Notes: $\overset{\text{h}}{\text{h}}$ $\overset{\text{k}}{\text{k}}$ $\overset{\text{h}}{\text{h}}$ $\overset{\text{k}}{\text{k}}$ $\overset{\text{a}}{\text{a}}$.
 Measure 22: Notes: $\overset{\text{g}}{\text{g}}$ $\overset{\text{e}}{\text{e}}$ $\overset{\text{f}}{\text{f}}$ $\overset{\text{e}}{\text{e}}$.
 Measure 23: Notes: $\overset{\text{a}}{\text{a}}$ $\overset{\text{f}}{\text{f}}$ $\overset{\text{e}}{\text{e}}$.
 Measure 24: Notes: $\overset{\text{f}}{\text{f}}$.
 Bass line: $\overset{\text{a}}{\text{a}}$ $\overset{\text{a}}{\text{a}}$ $\overset{\text{a}}{\text{a}}$ $\overset{\text{a}}{\text{a}}$.

Menuet du même

Musical score for 'Menuet du même' in Sol major, 3/4 time. The score is written on a grand staff with two systems of two staves each. The notation includes notes, rests, and ornaments. Fingerings are indicated by numbers 1-5. The piece concludes with a decorative flourish.

3 4
 a r a a r a a r e

6 4 5
 a a a a e r r e e e r e e e g a a e a r e a a

12 a a a a a a a a a a a a 4 5
 e f e f e e g e f e f h g g f e g

18 a 6 5 a e e g f e h g h f h h f a h a a r a r e a

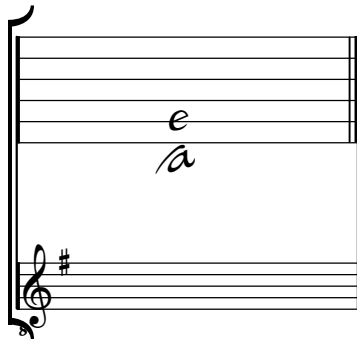
24 a r r r r e r e e r e r e e r e r a a a

28 a 4 a a

Tonalité : Sol majeur

Accord des basses du luth : 1 dièse

Scordature par octave



Accord des 11 chœurs du luth

