

[Compositeur anonyme]

Prélude (Prelude)

Si bémol majeur

Manuscrit de Munich D-Mbs5362

Munich, Bayerische Staatsbibliothek

D-Mbs ms. Mus. 5362

Folio 19v



Prélude (Prelude)

Handwritten musical notation for the first system, featuring a treble clef and common time signature. The notation includes various note values, rests, and dynamic markings such as 'f' and 'a'. Below the staff, there are handwritten annotations including 'a', '4', and '5'.

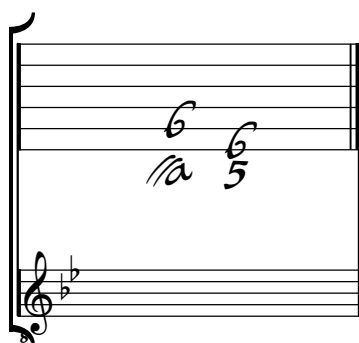
Handwritten musical notation for the second system, featuring a treble clef and common time signature. The notation includes various note values, rests, and dynamic markings such as 'f' and 'a'. Below the staff, there are handwritten annotations including 'a', '4', and '5'.

Handwritten musical notation for the third system, featuring a treble clef and common time signature. The notation includes various note values, rests, and dynamic markings such as 'f' and 'a'. Below the staff, there are handwritten annotations including 'a'.

Handwritten musical notation for the fourth system, featuring a treble clef and common time signature. The notation includes various note values, rests, and dynamic markings such as 'f' and 'a'. Below the staff, there are handwritten annotations including 'a'.

Tonalité : Si bémol majeur
Accord des basses du luth : 2 bémols

Scordature par octave



Accord des 12 chœurs du luth



