

Charles Mouton

(vers 1626 - vers 1699)

[4 pièces]

Do mineur

Manuscrit Milleran F-Pn82

Paris, Bibliothèque Nationale

F-Pn ms. Rés. 82

Folios 8 v. à 11 r.

Sans correspondance.

Les pièces

Tombeau de madame, Pavane de mouton.

Courante de mouton

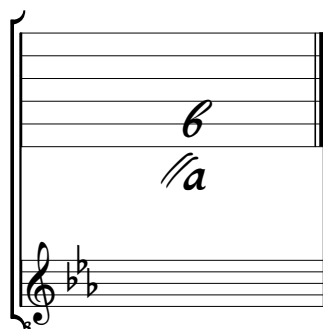
Sarabande de mouton

Gigue

Tonalité : Do mineur.

Il faut accorder la 9 sur le b de la 5.

Scordature par octave



Accord des 11 chœurs du luth



Tombeau de madame, Pavane de mouton.

The image displays a handwritten musical score for a piece titled "Tombeau de madame, Pavane de mouton." The score is written on a six-line staff in a lute tablature style, using letters 'a', 'b', 'c', 'd', 'e', 'f' to denote fret positions. Above the staff, rhythmic notation is provided, including various note values (quarter, eighth, sixteenth notes) and rests. The score is divided into measures, with measure numbers 3, 6, 9, 12, and 15 indicated on the left side. The piece begins with a 4/4 time signature, marked with a circled '4' and '(1*)'. The notation includes numerous accidentals (sharps and naturals) and dynamic markings such as 'f' (forte) and 'a' (accendo). The score concludes with a double bar line and repeat dots at the end of the final measure.

1. Tablature originale : trois notes de l'accord décalées sur le chœur supérieur. - Three notes are a course higher in original tablature.

19

22

25

28

31

Courante de mouton

Handwritten musical notation for 'Courante de mouton' in G major, 4/4 time. The score is written on a single staff with rhythmic notation above and tablature below. The piece consists of 24 measures.

Measures 1-4: *a* ²*r* *a* | *a* ¹*b* *a* | *a* ²*r* *a* ¹*b* | *a* ²*r* *a* ¹*b*

Measures 5-8: *a* ¹*b* *a* *a* | *a* ²*r* *a* *a* | *a* ³*r* *a* *a* *a* *r* *a* | *a* ²*r* *a* ¹*b* *a* ²*r* *a* ¹*b* *a*

Measures 9-12: *a* ¹*b* *a* | *a* ²*r* *a* ¹*b* *a* | *a* ³*r* *a* ²*r* *a* ¹*b* *a* | *a* ²*r* *a* ¹*b* *a* ²*r* *a* ¹*b* *a*

Measures 13-16: *a* ¹*b* *a* ²*r* *a* ¹*b* *a* | *a* ²*r* *a* ¹*b* *a* ²*r* *a* ¹*b* *a* | *a* ³*r* *a* ²*r* *a* ¹*b* *a* | *a* ²*r* *a* ¹*b* *a* ²*r* *a* ¹*b* *a*

Measures 17-20: *a* ¹*b* *a* ²*r* *a* ¹*b* *a* | *a* ²*r* *a* ¹*b* *a* ²*r* *a* ¹*b* *a* | *a* ³*r* *a* ²*r* *a* ¹*b* *a* | *a* ²*r* *a* ¹*b* *a* ²*r* *a* ¹*b* *a*

Measures 21-24: *a* ¹*b* *a* ²*r* *a* ¹*b* *a* | *a* ²*r* *a* ¹*b* *a* ²*r* *a* ¹*b* *a* | *a* ³*r* *a* ²*r* *a* ¹*b* *a* | *a* ²*r* *a* ¹*b* *a* ²*r* *a* ¹*b* *a*

The piece concludes with a double bar line and a repeat sign. A small floral illustration is located at the bottom right of the page.

1. Tablature originale : l'indication rythmique est une blanche.

Sarabande de mouton

Measures 1-5 of the Sarabande de mouton. The notation includes various rhythmic values (quarter, eighth, and sixteenth notes), rests, and dynamic markings such as *f* and *fz*. Fingerings are indicated by numbers 1, 2, and 3. The piece is in 3/4 time.

Measures 6-10 of the Sarabande de mouton. This section features first and second endings, indicated by '1.' and '2.' above the staff. It includes complex rhythmic patterns and dynamic markings like *fz*.

Measures 11-15 of the Sarabande de mouton. The notation shows a variety of rhythmic figures and dynamic markings, including *fz* and *f*. A '4' is written below the first measure, possibly indicating a measure rest or a specific tempo marking.

Measures 16-19 of the Sarabande de mouton. This section includes dynamic markings such as *fz* and *f*, and features complex rhythmic patterns. A '4' is written below the first measure.

Measures 20-22 of the Sarabande de mouton. The notation includes dynamic markings like *fz* and *f*. A '4' is written below the first measure.



Gigue

1

4

7

10

12

15

