

Adam Falckenhagen

(1697 - 1754)

Concerto

di Mr: Falckenhagen

Un poco più allegro che Andante, Largo, Vivace

Sol mineur

Manuscrit ROSANI de Leipzig D-LEmRos

Leipzig, Bibliothèques municipales, Bibliothèque de musique

D-LEm ms. III.11.64

Pages 54 à 59



X - Concerto di Mr: Falckenhagen

Un poco più allegro che Andante

Handwritten musical score for a concerto, featuring a single staff with various rhythmic notations, accidentals, and fingerings. The score is divided into measures, with measure numbers 3, 5, 8, 11, and 13 indicated on the left. The notation includes notes, rests, and dynamic markings like 'f' and 'a'.

3

5

8

11

13

16

Handwritten musical notation for measure 16. The staff contains notes and rests. Below the staff are fingerings: a, a, a, r, r, a, a, a, r, a, a, a, r, a, e.

18

Handwritten musical notation for measure 18. The staff contains notes and rests. Below the staff are fingerings: a, a, a, r, e, a, a, e, a, a, a, r, a, e, e, r, a, r, e, r, a, a, a, a, a, a, a.

20

Handwritten musical notation for measure 20. The staff contains notes and rests. Below the staff are fingerings: 4, 4, 4, 4, 5, 5, 5, 5, 5, 6.

22

Handwritten musical notation for measure 22. The staff contains notes and rests. Below the staff are fingerings: 5, 5, 5, 5, a, a, a, a, a, a, a, a, a, a.

24

Handwritten musical notation for measure 24. The staff contains notes and rests. Below the staff are fingerings: a, 4, a, 4, 5, 4, a, a.

26

Handwritten musical notation for measure 26. The staff contains notes and rests. Below the staff are fingerings: a, a, a, a, a, a, a, a, a, a, a, a, a, a, a, a, a, a, a, a.

28

Handwritten musical notation for measure 28. The staff contains notes and rests. Below the staff are fingerings: 5, a, a, a, a, a, a, a, a, a, a, a, a, a, a, a, a, a, a, a.

30

a a a a a a r r a

6 4 6

32

a a a r a a a a a a a a r a a

5 4 a a a a a

34

a a a a a a a e a

4 a a a a 4 a

36

a a a a a a a a a a a a a a

5 a 4 a a

38

a a a a a a a a

a a a a a a a a

40

a a a a a a a a a a a a a a

a a a a a a a a 5 5 5 5

42

a a a a a a a a

5 5 5 5 5

Largo

Musical score for 'Largo' in 3/4 time, featuring a single melodic line on a five-line staff. The score is divided into measures with various rhythmic values and fingerings. The notes are primarily 'a' and 'e' with various accidentals and articulations. The score includes a key signature change to one flat (B-flat) and a common time signature change to 4/4.

3/4 *a a a* *a a a* *a a a*

4 *a a a* *a a a* *a a a* *a a a*

8 *a a a* *a a a* *a a a* *a a a*

12 *a a a* *a a a* *a a a* *a a a*

16 *a a a* *a a a* *a a a* *a a a*

20 *a a a* *a a a* *a a a* *a a a*

24

5 5 5 6 6 6 5 5 5 //a

29

//a a a a 4 a a a

33

5 //a //a//a//a //a a //a

38

a a a a a a

42

a a a a a a //a//a//a

47

//a//a//a 4 4 4 4 4 5 4 //a//a a

Segue Vivace.

Vivace

System 1 (Measures 1-5):
 Staff: $\frac{3}{4}$
 Notes: \hat{a} , \hat{a} , \hat{b} , \hat{a} , \hat{a} , \hat{r} , \hat{a} , \hat{b} , \hat{a} , \hat{b} , \hat{a} , \hat{b} , \hat{a} , \hat{b} , \hat{r} , \hat{a} , \hat{r} , \hat{a}
 Fingering: 5, $\hat{\hat{a}}$, $\hat{\hat{a}}$, 4, 5, $\hat{\hat{a}}$, \hat{a}

System 2 (Measures 6-10):
 Staff:
 Notes: \hat{a} , \hat{a} , \hat{b} , \hat{a} , \hat{a} , \hat{r} , \hat{a} , \hat{b} , \hat{a} , \hat{b} , \hat{a} , \hat{b} , \hat{a} , \hat{b} , \hat{a} , \hat{b} , \hat{a} , \hat{b} , \hat{a} , \hat{b} , \hat{a} , \hat{b}
 Fingering: 5, $\hat{\hat{a}}$, $\hat{\hat{a}}$, 4, 5, $\hat{\hat{a}}$, \hat{a} , 5

System 3 (Measures 11-17):
 Staff:
 Notes: \hat{b} , \hat{a} , \hat{b} , \hat{b} , \hat{a} , \hat{b} , \hat{a} , \hat{b} , \hat{a} , \hat{b} , \hat{a} , \hat{b} , \hat{a} , \hat{b} , \hat{a} , \hat{b} , \hat{a}
 Fingering: $\hat{\rho}$, $\hat{\hat{a}}$, $\hat{\hat{a}}$, 4, 5, $\hat{\hat{a}}$, $\hat{\hat{a}}$, \hat{a} , $\hat{\rho}$, $\hat{\hat{a}}$, $\hat{\hat{a}}$, $\hat{\hat{a}}$

System 4 (Measures 18-23):
 Staff:
 Notes: \hat{a} , \hat{a} , \hat{b} , \hat{a} , \hat{b} , \hat{a} , \hat{a} , \hat{b} , \hat{a} , \hat{b} , \hat{a} , \hat{b} , \hat{a} , \hat{b} , \hat{a} , \hat{b} , \hat{a}
 Fingering: 4, \hat{a} , $\hat{\rho}$, $\hat{\hat{a}}$, $\hat{\hat{a}}$, 4, 5, $\hat{\hat{a}}$, \hat{a} , 5

System 5 (Measures 24-28):
 Staff:
 Notes: \hat{a} , \hat{b} , \hat{a} , \hat{a} , \hat{a} , \hat{a} , \hat{a} , \hat{b} , \hat{a} , \hat{a} , \hat{b} , \hat{a} , \hat{a} , \hat{b} , \hat{a} , \hat{b} , \hat{a} , \hat{b} , \hat{a} , \hat{b}
 Fingering: \hat{a} , $\hat{\rho}$, $\hat{\hat{a}}$, \hat{a} , $\hat{\hat{a}}$, $\hat{\hat{a}}$, $\hat{\rho}$, 5, $\hat{\rho}$

System 6 (Measures 29-34):
 Staff:
 Notes: \hat{a} , \hat{a} , \hat{b} , \hat{a} , \hat{a} , \hat{a} , \hat{a} , \hat{a} , \hat{a} , \hat{r} , $\hat{\rho}$, \hat{r} , \hat{b} , \hat{r} , \hat{r} , \hat{a} , \hat{r} , \hat{a} , \hat{r} , \hat{b} , \hat{r} , $\hat{\rho}$, \hat{b}
 Fingering: \hat{a} , $\hat{\rho}$, 5, $\hat{\rho}$, \hat{a} , 4, \hat{r} , \hat{a} , 4

35

a *la* *lla*

40

lla 4 5 6 *la* *o* *lla*

45

la *o* 5 *lla lla* 4 5 *lla lla* *la* *la*

52

la la la *la* *la la la* *la la la* *la la la* *la la la*

58

la la la *lla* *lla* 4 5

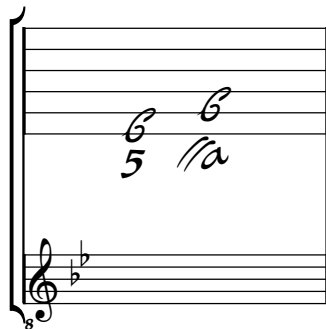
63

lla la 5

Tonalité : Sol mineur

Accord des basses du luth : 2 bémols

Scordature par octave



Accord des 13 chœurs du luth

