

Gleinig

? - ?

Paisane
Gleinig
et Bourée

Sol majeur

Manuscrit d'Haslemere

Haslemere, Carl Dolmetsch Library

GB-HAdolmetsch ms II.B.2

Page 106

Sans correspondance.



Paisane. Gleinig

2
 4

6

12

19

26

33

Fin

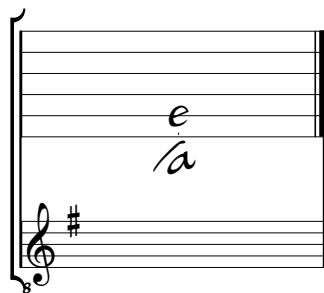
Da
Capo

Bourée.

Musical score for Bourée in Sol major, page 2. The score consists of six systems of music, each with a treble clef and a common time signature. The notation includes various rhythmic values (quarter, eighth, and sixteenth notes), rests, and dynamic markings such as 'f' (forte) and 'a' (accendo). The melody is written on a five-line staff, and the bass line is indicated by letters 'a' and 'e' below the staff. The piece concludes with a double bar line and a decorative flourish.

Tonalité et accord du luth : Sol majeur

Scordature par octave



Accord des 11 chœurs du luth

